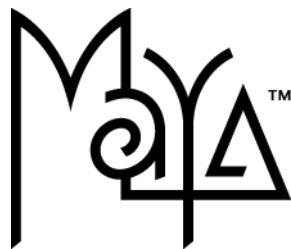




Hair and Dynamic Curves

Version 6



© Copyright 2004 Alias Systems, a division of Silicon Graphics Limited ("Alias"). All images © Copyright Alias unless otherwise noted. All rights reserved. Inside cover image created by Duncan Brinsmead. Inside cover model created by Inspeck.

Alias is a registered trademark and the swirl logo, the Maya logo, Conductors, Trax, IPR, Maya Shockwave 3D Exporter and MEL are trademarks of Alias in the United States and/or other countries worldwide. Maya is a registered trademark of Silicon Graphics, Inc. in the United States and/or other countries worldwide, used exclusively by Alias. SGI, IRIX, Open GL and Silicon Graphics are registered trademarks of Silicon Graphics, Inc. in the United States and/or other countries worldwide. mental ray and mental images are registered trademarks of mental images GmbH & CO. KG. in the United States and/or other countries. Lingo, Macromedia, Director, Shockwave and Macromedia Flash are trademarks or registered trademarks of Macromedia, Inc. Wacom is a trademark of Wacom Co., Ltd. NVidia is a registered trademark and Gforce is a trademark of NVidia Corporation. Linux is a registered trademark of Linus Torvalds. Intel and Pentium are registered trademarks of Intel Corporation. Red Hat is a registered trademark of Red Hat, Inc. ActiveX, Microsoft and Windows are either registered trademarks or trademarks of Microsoft Corporation in the United States and/or other countries. Mac, Macintosh and QuickTime are trademarks of Apple Computer, Inc., registered in the United States and other countries. Adobe, Adobe Illustrator, Photoshop and Acrobat are either registered trademarks or trademarks of Adobe Systems Incorporated. UNIX is a registered trademark, licensed exclusively through X/Open Company, Ltd. AutoCAD, Discreet Logic, Inferno and Flame are either registered trademarks or trademarks of Autodesk, Inc. in the USA and/or other countries. OpenFlight is a registered trademark of MultiGen Inc. Java is a registered trademark of Sun Microsystems, Inc. RenderMan is a registered trademark of Pixar Corporation. Softimage is either a registered trademark or trademark of Avid Technology, Inc. in the United States and/or other countries. All other trademarks, trade names, service marks, or product names mentioned herein are property of their respective owners.

This document contains proprietary and confidential information of Alias, and is protected by Federal copyright law and international intellectual property conventions and treaties. The contents of this document may not be disclosed to third parties, translated, copied, or duplicated in any form, in whole or in part, or by any means, electronic, mechanical, photocopying, recording or otherwise, without the express prior written consent of Alias. The information contained in this document is subject to change without notice. Neither Alias, nor its affiliates, nor their respective directors, officers, employees, or agents are responsible for any damages of any kind arising out of or resulting from the use of this material, including, without limitation, any lost profits or any other direct, indirect, special, incidental, or consequential damages or for technical or editorial omissions made herein.



Table of Contents

Table of Contents	3
1 Introducing Hair	9
About	
Hair and Dynamic Curves	9
Hair overview	9
Hair connections	10
Paint Hair Tool	10
Rendering Hair	10
Hair Output	10
Basic workflow for Hair	12
2 Creating hair	15
About	
Hair	15
Creating hair	15
Start, Rest, and Current Position curves	15
Passive hair curves	16
Creating other models and effects with hair	18
How do I?	
Simulate hair	19
Create hair	19
Create hair	19
Choose which hair curves to display	20
Select hair, follicles, curves, and CVs	21
Set curve positions	22
Assign a selection to a hair system	23
Select which UV set to use for Hair (polygons only)	23
Make curves dynamic	25
Delete hair	26
Reference	
Menus	26
Dynamics menu set	26
Hair	26
Hair > Create Hair	26
Hair > Create Hair > <input type="checkbox"/>	26

Table of Contents

Hair > Paint Hair Tool	28
Hair > Paint Hair Tool > <input type="checkbox"/>	28
Hair > Display	31
Hair > Set Start Position	31
Hair > Set Rest Position	31
Hair > Convert Selection	31
Hair > Assign Hair System	31
Hair > Make Selected Curves Dynamic	31
Hair > Delete Entire Hair System	32
Nodes	32
Hair nodes	32
pfxHair node	32
hairSystemShape node	32
Related topics	32
Clump and Hair Shape	33
Dynamics	35
Collisions	36
Turbulence	37
Shading	38
Displacements	39
Multi Streaks	39
follicleShape node	40
Related topics	40
Per Follicle Overrides	41
3 Simulating hair	45
How do I? Simulate hair	45
Play a hair simulation	45
Use hair caches	46
Create a hair cache	46
Append to a hair cache	47
Truncate a hair cache	47
Delete a hair cache	48

Table of Contents

Reference	Menus	48
	Dynamics menu set	48
	Hair	48
	Hair > Create Cache	48
	Hair > Create Cache > <input type="checkbox"/>	48
	Hair > Append to Cache	49
	Hair > Append to Cache > <input type="checkbox"/>	49
	Hair > Truncate Cache	49
	Hair > Delete Cache	49
4	Modifying hair	51
About	Hair and Dynamic Curves	51
	Styling hair and modifying the hair look and behavior.	51
	Related topics.	52
How do I?	Simulate hair	52
	Modify hair	52
	Style the hair and modify behavior.	52
	Change the look of the hair	53
	Paint hair	53
	Modify the hair system.	54
	Modify hair follicles	55
	Adjust the hair length.	55
	Edit hair curves	56
	Hair curve editing tools.	56
	Braid hair	58
	Make hair collide.	59
	Fine tune collisions.	59
	Set up hair constraints	61
	Hair constraint types.	63
	Work with collision hair constraints.	64
	Assign a Paint Effects brush to Hair	65
	Tips for Paint Effects brushes assigned to Hair	67
Reference	Menus	69

Table of Contents

Dynamics menu set	69
Hair	69
Hair > Scale Hair Tool	69
Hair > Modify Curves	69
Lock Length	69
Unlock Length	69
Straighten	69
Smooth	69
Curl	70
Bend	70
Scale Curvature	70
Hair > Create Constraint	70
Hair > Create Constraint > Rubber Band	70
Hair > Create Constraint > Stick	70
Hair > Create Constraint > Transform	71
Hair > Create Constraint > Hair to Hair	71
Hair > Create Constraint > Hair Bunch	71
Hair > Make Collide	71
Hair > Assign Paint Effects Brush to Hair	71
Nodes	72
Hair nodes	72
hairConstraintShape node	72
5 Rendering Hair	75
How do I? Simulate hair	75
Render scenes with hair	75
Set up hair shading	75
Hair system shading	75
Follicle shading	76
Tube shading	76
Set up hair self-shadowing	76
Render scenes with hair	78
Rendering using distributed render	80

Table of Contents

Reference	Nodes	81
	Hair nodes	81
	hairTubeShader node.	81
6	Samples and techniques for Hair	83
How do I?	Simulate hair	83
	Sample hairstyles	83
	Create wavy, curly hair.	83
	Create ponytails and braids	86
	Sample dynamic curve scenarios	88
	Dynamic spline IK chain illustrated using a butterfly tail	88
	Stiffness Scale along curve and emit particles from curve illustrated with a fishing rod and line	90
	Advanced tips for working with Hair.	93
	Max Hair Density option variable	93
	Using the pfxstrokes command	94
	Using a follicle node as a point on poly constraint	94
	Attaching a skipping rope (dynamic curve) to hands	95
	Hair as a wire deformer	95
	Troubleshoot Hair.	95
	Hair simulation is slow when using NURBS Curves output	96
	Undo doesn't work with Lock Length on.	96
	Unruly, jiggy hairs during playback.	96
	Index	97

Table of Contents

1

Introducing Hair

About

Note Hair is available only in Maya Unlimited.

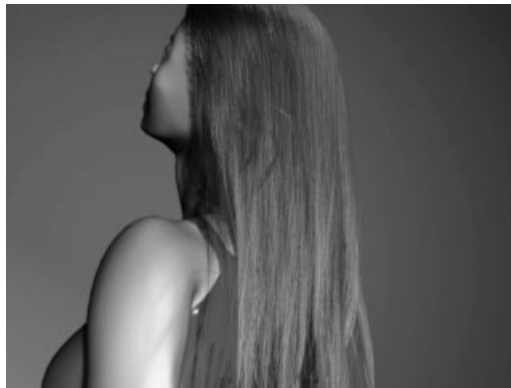
Hair overview

Hair is a component of Maya Unlimited that you use to create a dynamic hair system so you can model realistic hairstyles and hair behavior. Since Hair is a generic dynamic curve simulation, you can also use these curves to create non-hair effects.

With Hair you can simulate:

- natural movement and collisions of long hair
- hair blowing in the wind or being blow dried
- hair when swimming underwater
- various hairstyles, including ponytails, braids, and updos
- other dynamic curve effects such as ropes, chains, cables, wires, a suspension bridge, sea creatures, or even a lofted surface from a curve. For more information, see "Creating other models and effects with hair" on page 18.

To get started quickly using Maya Hair, see the Hair lessons in the Getting Started with Maya Unlimited tutorials.



Hair connections

A *hair system* is a collection of hair *follicles*. A NURBS or polygonal surface can have multiple hair systems on the same surface and one hair system can span multiple surfaces.

1 | Introducing Hair

About > Paint Hair Tool

A hair follicle in human hair typically hosts one hair, whereas in Maya each hair *follicle* hosts a hair curve. The hair *follicle* controls the attributes and curves associated with a particular hair clump, and how the hairs attach to a NURBS or polygonal surface. The input to each follicle is a Start Position NURBS curve, a surface and a UV position to attach to.

When creating hair, the hair system *output* can be in the form of NURBS curves, Paint Effects strokes, or both. If the specified output when creating hair is NURBS Curves, each follicle will contain one NURBS curve that represents the position of the hair in that follicle. If the specified output is Paint Effects, each follicle has a hair clump, made up of Paint Effects strokes.

There are various attributes on a hair system for modifying the look and behavior of the hair as a whole. There are also follicle level attributes that will override the hair system attributes; the visible result will be affected by both the follicle and hair system attributes.

Paint Hair Tool

With the Paint Hair Tool you can create hair, add and remove follicles, as well as paint follicle attributes, including Hair Scale, Stiffness, and Braid.

Rendering Hair

Paint Effects hair can be rendered using the Maya Software renderer. You can also convert Paint Effects hair to polygons and render in another renderer, such as mental ray. Or you can output just the dynamic NURBS curves to an external renderer, such as RenderMan.

Hair Output

Consider outputting Hair to Paint Effects if you want to:

- render with the Maya Software renderer
- convert the Paint Effects hair to polygons and render in any renderer

Consider outputting Hair to NURBS curves if you want to:

- use the curves for output to another renderer that directly supports curve rendering.
- select a few Current Position curves and loft a surface through them with construction history.
- extrude a circle down the curve to create a tube.
- use the curves as path or control curves for any standard Paint Effects brush, such as feathers or vines. These brushes behave differently than the default built-in Paint Effects as the curves are not the hairs, but controls that interpolate and affect Paint Effects. This scenario is

1 | Introducing Hair

About > Hair Output

slower to update and takes a bit of time to set up. Alternatively, you could just assign a Paint Effects brush to a hair system (you don't need NURBS Curves output for this).

Consider outputting Hair to both NURBS curves and Paint Effects if you want to:

- use both the curves (for example, as particle emitters to simulate spray flying off wet hair) and render using the integrated Paint Effects either directly or by converting to polygons.



1 | Introducing Hair

About > Basic workflow for Hair

For all images above the model was created by Danny Mousses and the hair was created by Duncan Brinsmead.

Basic workflow for Hair

This is the general workflow to create and animate hair:

- create hair on models
- style hair curves
- modify hair attributes
- set up hair shading/shadowing
- render the scene

An initial workflow could be:

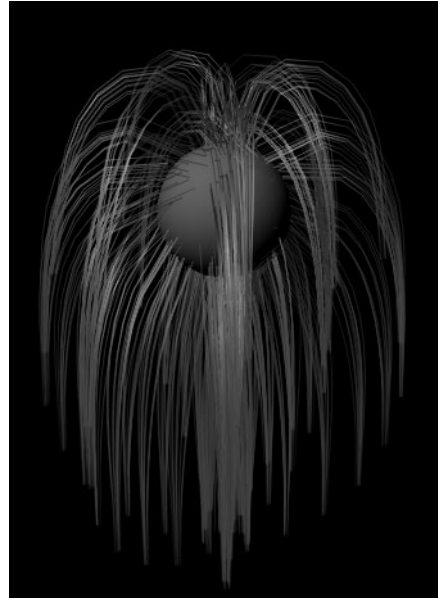
- 1** Create a sphere.
- 2** Create hair. Hair sticks out normal to the surface.
- 3** Play the simulation. The hair falls due to built-in dynamic forces.
- 4** Once the hair is relaxed, select the hair curves and set the Start Position from the Current Position. (Hair > Set Start Position > From Current)
- 5** Animate the sphere as required to see natural motion or move the sphere during interactive playback. (Solvers > Interactive Playback)
- 6** Render the scene.

1 | Introducing Hair

About > Basic workflow for Hair



Hair in Perspective View



Hair in Render View

1 | Introducing Hair

About > Basic workflow for Hair

2 Creating hair

About

Creating hair

Before creating hair, consider the following:

- How do you want to render hair? The renderer you want to use affects what Output setting you choose when you create hair. For more information, see "Hair Output" on page 10 and "Rendering Hair" on page 10.
- Do you want to include passive hair curves in your hair system? See "Passive hair curves" on page 16.
- Do you want to include Rest curves in your hair system? See "Start, Rest, and Current Position curves" on page 15 and "Create Rest Curves" on page 28.
- What kind of hair style do you want to create? If short and simple, you can keep your Points Per Hair (segments) low, but if you're creating long hair or a short, complex hairstyle you need more segments for flexible, natural looking hair. Also, you can create multiple hair systems on the same surface, which can be helpful if you're adding bangs (fringe) to a model. See "Assign a selection to a hair system" on page 23.
- If creating hair on a polygon, which UV set do you want to use? Use UV sets to define where the hair goes and to control its distribution and density. See "Select which UV set to use for Hair (polygons only)" on page 23.
- Do you want to use dynamic curves for a non-hair simulation? For more information, see "Creating other models and effects with hair" and also "Make curves dynamic" on page 25.

Start, Rest, and Current Position curves

There are three sets of curves for the hair system.

Start Curves/ Position	This is the position of the hair at the start frame of the simulation. When first created, the Start curves stick straight out from the surface.
---------------------------	--

2 | Creating hair

About > Passive hair curves

Rest Curves/ Position	<p>This is the position of the hair when no forces (such as gravity) are acting upon it. You can use these curves to influence the shape of the hair.</p> <p>Working with Rest curves is like styling hair with hairspray. The Rest curves are styled into curls and flips, etc. When the simulation is played back, the hair adheres to the Rest curves position as much as possible depending on dynamic forces and attribute settings in the hair system and follicles. For example, if your hair is not very stiff and you're simulating a windy day, the hairspray (Rest curves position) is less likely to hold the hair in position.</p>
Current Position	<p>Tip: The Damp value can be used to relax oscillating curves on non-straight hair.</p> <p>These are the output and/or Paint Effects curves generated by the hair system.</p> <p>This is how the hair behaves when you play the simulation, which includes built-in dynamics. Do not edit the Current Position; just view it.</p> <p>The Stiffness and Iterations attributes in the Hair system's Dynamics section are what control the tolerance of the Current Position achieving the Rest Position.</p>

Passive hair curves

You can specify a ratio of passive curves (Passive Fill) to active curves. Passive curves interpolate the dynamic behavior of active curves, but are less expensive than simulating every curve. See "Passive Fill" on page 27.

More specifically, passive follicles have their motion defined by interpolating the motion of neighboring dynamic follicles, rather than computing their own motion. They can be used with both Paint Effects and NURBS Curve output.

If a passive hair does not have an input Start position curve then its shape, in addition to its motion, is determined by interpolating the neighboring dynamic hairs. Dynamics, forces or collisions are not computed on passive hairs. (The Simulation Method attribute on the follicleShape node determines whether a hair will be dynamic, passive or static. Static hairs simply keep the Start position and do not animate.) (See "Start Curves/ Position" on page 15.)

2 | Creating hair

About > Passive hair curves

The Passive Fill attribute determines the proportion of the follicles that are initially set to active versus passive. If the Passive Fill is 1, then every other row and column of follicles will be passive (with the points not in these rows or columns being dynamic). If it is 2 then there will be two rows/columns of passive for each row containing dynamic. The number of dynamic hairs goes down dramatically as the Passive Fill increases. If the motion of the hair is relatively uniform you might not see much difference when a large percentage of the hairs are passive. However the Passive Fill will be uniformly interpolated between the active hairs. This creates a uniform mass of hair, without requiring self collision.

When the follicle is created, a Start position curve is not created for passive follicles, although you can easily set one up by selecting the passive follicle and then selecting Hair > Set Start Position > From Current. You can then edit the shape of the passive hair by editing its Start curve.

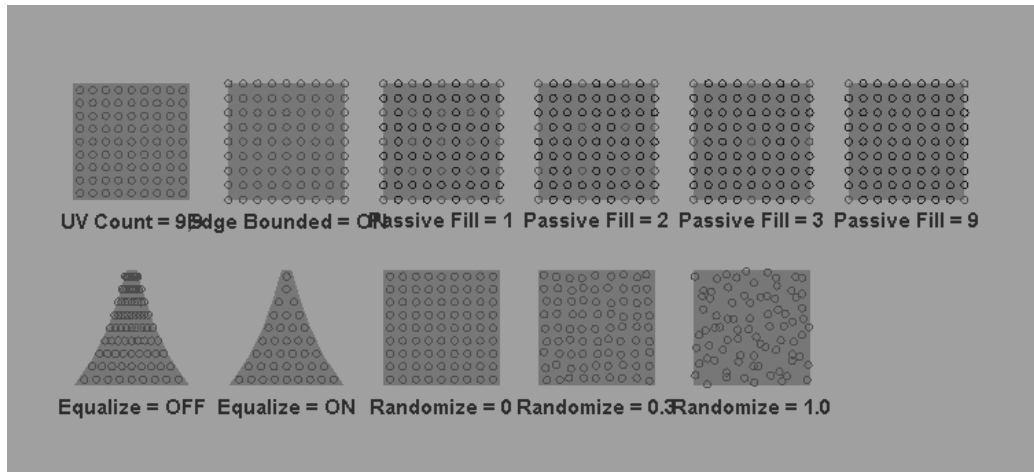
Passive follicles can also be used purely for modeling. Use them to sculpt the hair by modifying a small set of Start curves. To do this, first create the hair with an initially small proportion of dynamic hairs. Display both the Current and Start positions and set the Time Slider to the start frame. When you edit the Start hairs for dynamic follicles, the passive hairs that don't have start positions will interpolate. When you're done shaping the hair you can set the Start position from the Current position for the passive follicle, then make them active. (Select the follicles and in the Channel Box set Simulation Method to Dynamic.)

In terms of optimizing performance, the passive follicles will only help in certain situations currently, as the dynamic computations are typically a small part of the overall computation expense with the hair feature, especially if output curves are used. For large numbers of follicles, Paint Effects output can be 10 times faster than NURBS Curve output. You'll tend to notice the most performance improvement when using passive follicles if you are colliding with geometry and the iterations value on the hair system is very high and the number of CVs on the simulating curves is high. (The number of points on the simulating curve is the number of CVs on the Start curve times the sample density on the follicle node.) Other factors that affect the dynamics, like collide oversample and fields applied to the hair, will further show up the performance improvement. There is also a Simulation Method option in the hairSystemShape node that lets you only output active follicles, hiding the passive ones.

However the biggest advantage is probably that the passive hairs move as a coherent group. This can be used to fake some of the self collision coherence of large groups of hairs, without the overhead of self collision. The other advantage is that they also do not need to be directly modeled.

2 | Creating hair

About > Creating other models and effects with hair



Each grid from left to right illustrates what the passive to active fill would be like with the given settings

Creating other models and effects with hair

Any NURBS curve can be made into a dynamic hair, such as a curve deformer or input curves to a lofted surface. In addition to creating long hair and hairstyles you can use hair curves to create:

- ropes and chains (dynamic curves)
- a fish (wire deformer)
- a fishing line (single hair with expressions)
- a tied-back beaded curtain (hairs with a constraint)
- an octopus (select Hair curves and create a lofted surface)
- a suspension bridge
- a wire deformer on particles

For more information, see "Make curves dynamic" on page 25 and "Sample dynamic curve scenarios" on page 88.

How do I? Create hair



You can create hair on NURBS and polygonal surfaces. For polygons, UVs should be non-overlapping and fit between 0 and 1. Automatic mapping is a quick way to achieve this. (See *Map UVs onto polygons automatically* in the Polygonal Modeling guide in Maya Help.) You can also choose which UV set you want to use; see “Select which UV set to use for Hair (polygons only)” on page 23.

Before creating hair, you should determine which renderer you’ll be using as this will affect what type of hair output you select: NURBS curves or Paint Effects. For more information about the differing outputs and what to consider when selecting output, see “Hair Output” on page 10 and “Hair > Create Hair” on page 26.

If you create hair when an existing hair system node is selected along with the surface(s), then the newly created hairs will belong to that hair system.



If you create hair twice on the same surface with the same settings (with Randomization set to 0), no new hairs will be created. If you were to instead double the UV count, new hairs would be inserted on a double resolution grid with the new hairs occurring between the old hairs (every odd new hair would be rejected).

Note See the “Max Hair Density option variable” on page 93.

2 | Creating hair

How do I? > Choose which hair curves to display

To create hair

- 1 Select the surface on which you want to create hair.
- 2 Do one of the following:
 - From the Dynamics menu set, select Hair > Create Hair > , modify the hair options as desired and then click Create Hair. For descriptions of the hair options, see “Hair > Create Hair.”
 - From the Dynamics menu set, select Hair > Paint Hair Tool > , set the Follicle Density U and V, the Points Per Hair and the Hair Length, then paint on the surface where you want hair. For information on the Paint Hair Tool options, see “Hair > Paint Hair Tool.”

When you first create hair, the hair appears sticking out perpendicular (normal) from the surface. The hair is displayed in the Current Position. Before editing the hair, be sure to change to either the Start Position or Rest Position. Do not edit hair in the Current Position. (See “Choose which hair curves to display.”)

If you created or painted hair with Output set to NURBS Curves, a `hairSystemShape` node is created. This node contains all the attributes that define the look and behavior of the hair.

If you created or painted hair with Output set to Paint Effects, an additional node is created, the `pxHair` node.

Tip If the hair appears to start “off” the surface, you can paint the Surface Inset attribute. See “Hair > Paint Hair Tool.”

Choose which hair curves to display

There are three sets of curves for the hair system that you can display.

- Start curves
- Rest curves
- Current Position curves

For descriptions of these curves and when to use them, see “Start, Rest, and Current Position curves” on page 15.

You can also display more than one set of curves at the same time. These are helpful when using a workflow such as first modeling the curves and playing the simulation, and then repeating this.

Current and Start	Displays both the Current (dynamic) and Start curves.
-------------------	---

Current and Rest	Displays both the Current (dynamic) and Rest curves.
All	Displays all three types of curves: Start, Rest, and Current (dynamic).

To change to another hair display position

Select Hair > Display and then selected the desired hair position.

To show or hide Paint Effects strokes

In the panel, select Show > Strokes.




To show or hide NURBS curves

In the panel, select Show > NURBS Curves.

Select hair, follicles, curves, and CVs

For various options you will need to select either the hair system, hair follicles, curves, or CVs.

To make it easier to pick a hair system, curves, or follicles, set the following pick mask:

- Click the Object Selection Mask  button on the Status Line and select All Objects Off.
- Click the  button on the Status Line to restrict the selection to curves.
- To make it easier to pick CVs on hair curves, do the above and then click the  button on the Status Line.

And then you can select Hair > Convert Selection to convert your curve selection to the hair system, follicles, specific curves (Start, Rest), or CVs. See "Hair > Convert Selection" on page 31.

To select the hair system

Do one of the following:

- Drag to select the hair curves and then select Hair > Convert Selection > to Hair Systems.
- Select hairSystem in the Outliner or Hypergraph. (Window > Outliner, Window > Hypergraph)

2 | Creating hair

How do I? > Set curve positions

To select follicles

In the Start or Rest Position, select the curve(s) relating to the desired follicle(s) and then select Hair > Convert Selection > to Follicles.

To select curves

You may find it easier to select curves by turning off the Strokes display. (Show > Strokes)

In the Start or Rest Position, click a curve to select it and then shift + click to select additional curves.

To select all curves

- 1 Do one of the following:
 - Drag a box around the surface to select all curves.
 - Select hairSystem in the Outliner or Hypergraph. (Window > Outliner, Window > Hypergraph)
- 2 Optionally, select Hair > Convert Selection and then select either *to Start Curves*, *to Rest Curves*, or *to Current Positions*.

Set curve positions

When hair is created, Start curves are created automatically. If Create Rest Curves was turned on in the Create Hair Options window, then Rest Curves are created as well. If not, then you can create Rest Curves at any time using the Start or Current Position curves. When you play the simulation, the Current Position is what you display to see the hairs react to dynamic forces.

When creating curves for hair, Rest and Current Position curves are initially colored brown and blue, respectively, to help distinguish them from Start Position curves. This is done using the Draw Overrides on these curve nodes. Layers depend on Draw Overrides as well; therefore, if you create the hair in a layer or add it to a layer, then the color of all hair curves is now the same, even if the hair is subsequently removed from the layer.

While modeling hair, you may reset the Start or Rest curve positions several times.

To set Start curve positions

- 1 Select the curves you want to set.
- 2 Select Hair > Set Start Position and then select one of the following:
 - From Current. This sets the Start Position to the Current Position.
 - From Rest. This sets the Start Position to the Rest Position.

To set Rest curve positions

- 1 Select the curves you want to set.
- 2 Select Hair > Set Rest Position and then select one of the following:
 - From Current. This sets the Rest Position to the Current Position.
 - From Start. This sets the Rest Position to the Rest Position.

Assign a selection to a hair system

You can assign a selection (curves, follicles, CVs, hair system) to either an existing hair system or a new hair system.

If the selection consists of hairs that are currently part of another hair system and you assign this to a new hair system, the original hair system will be duplicated and the selected hairs attached to that duplicate. Thus this provides a means where one can take a few hairs and adjust hair system settings for just those hairs. Constraints on hairs are also transferred when assigning a hair system. If only a few of the hairs being constrained are reassigned, then the constraint will be duplicated such that each hair system has a constraint. If all the hairs being constrained are reassigned, then the constraint is completely moved to the new hair system and no new constraints are created.

To assign a selection to a hair system

- 1 Select the curves, follicles, CVs or hair system you want to assign. If your selection is follicles or CVs, convert the selection to curves.
- 2 Select Hair > Assign Hair System and then select either an existing hair system or a new hair system.

Select which UV set to use for Hair (polygons only)

Use UV sets to define where the hair goes and to control its distribution and density.

By default Hair uses UV set map1, but you can link your hair systems to different UV sets on your polygonal surface. For example, if you have different UV sets defined for different projections, you can link the hair systems to the UV set that gives the best result.

In the Relationship Editor, when you link a hair system to a UV set, all the hair systems attached to the polygon are linked to that UV set. However the UV set is controlled by the mapSetName attribute in the Extra Attributes section in the follicleShape node, so you could define it from there. (Currently you cannot edit the follicle's mapSetName attribute in the Attribute Spreadsheet.)

2 | Creating hair

How do I? > Select which UV set to use for Hair (polygons only)

Related topics

- ❖ *UV sets*
- ❖ *Create UV sets*
- ❖ Edit Polygons > Texture > Automatic Mapping

Tip Currently you need to create a UV set for hair that is between zero and 1. You can use regions outside this range for areas you want to be bald. Or if you simply do not define UVs for a triangle, then it will be bald. You should do this before creating the hairs, as on creation of hair, hairs are rejected that are located at undefined UV locations. If the UV for a follicle becomes undefined after creation, then the follicle will simply move to the center of the object; however, you could then manually select and delete these follicles. See "Create hair" on page 19.

To link attached hair systems to a different UV set

- 1** Select the object with the hair system(s) you want to link.
- 2** Select Window > Relationship Editors > UV Linking > Hair/UV to open the Relationship Editor.
The left panel lists all the hair systems that are attached to the selected polygon.
The right panel lists mesh nodes with UV Sets for the selected polygon. If more than one polygon is selected, only the last selected polygon is listed.
- 3** In the left panel, click a hair system. In the right panel the UV set the Hair follicle is linked to becomes highlighted.
- 4** In the right panel, click the UV set you want to link the hair system to.

Make curves dynamic

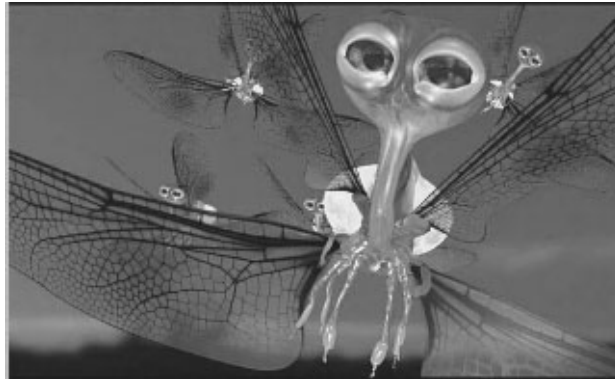


Image created by Danny Mousses

You can make any curve a dynamic (hair) curve. When making curves dynamic keep in mind that hair stiffness is defined per CV and is dependant on the number of CVs in the simulating hair. By default this matches the number of CVs in the start curve. The Sample Density on the follicle can be used to scale this number. If the Sample Density is 2.0 then the simulating (and output curve) will have twice as many CVs and be half as stiff.

When applying Make Selected Curves Dynamic on a curve with only a few CVs (such as 4) the curve tends to be very stiff. You can lower the Stiffness, but if you want more detail in the output you can increase the Sample Density on the follicle. In terms of Stiffness, when there are many CVs on a curve (20 or more) the problem is usually achieving both more Stiffness and less Length Flex. The way you do this is by increasing the Iterations attribute on the hair system. In some cases you might want a floppy rope with many CVs that is not stretchy. For this you need higher Iterations and a Stiffness value that is very low (such as 0.001). In general you should use as few CVs as required, especially when stiffness is desired as this is more efficient.

For sample scenarios using dynamic curves, including images and workflows, see:

- “Dynamic spline IK chain illustrated using a butterfly tail” on page 88
- “Stiffness Scale along curve and emit particles from curve illustrated with a fishing rod and line” on page 90

To make a curve dynamic

- 1 Select the curve(s).
- 2 Select Hair > Make Selected Curves Dynamic. The selected curves are now dynamic hair curves.

2 | Creating hair

Reference > Delete hair

If a hair system is selected in addition to NURBS curve(s), then the curves will be assigned to that hair system.

- 3 Modify the curve attributes in the follicleShape node of the Attribute Editor. For descriptions of these attributes, see "follicleShape node" on page 40.

Tip The Damp value can be used to relax oscillating curves on non-straight hair.

Delete hair

A hair system is made up of many components and connections. You can delete curves, follicles, and CVs by selecting them and pressing the Delete key. (See "Select hair, follicles, curves, and CVs" on page 21.) But to remove an entire hair system (including its curves, follicles and CVs) use the following procedure.

To remove a hair system

- 1 Do one of the following:
 - Drag to select the hair curves and then select Hair > Convert Selection > to Hair Systems.
 - Select hairSystem in the Outliner. (Window > Outliner)
 - Select any curve, follicle, or CV in the hair system.
- 2 Select Hair > Delete Entire Hair System.

Reference Hair > Create Hair

Use this to create dynamic hair on a NURBS or polygon surface. For more information, see "Create hair" on page 19.

Hair > Create Hair > □

These are descriptions for the options in the Create Hair Options window.

Output

This is the hair system's output. For information on what to consider when choosing the output, see "Hair Output" on page 10. Select from one of the following:

Paint Effects	Each follicle has a hair clump (strokes) containing information about the color and shading of the hair, as well as its position.
NURBS Curves	Each follicle contains one NURBS curve that represents the position of the hair in that follicle.
Paint Effects and Curve	Each follicle contains one NURBS curve that represents the position of the hair in that follicle. Each follicle also has a hair clump (strokes) containing information about the color and shading of the hair.

U Count

The number of follicles to be created along the U direction.

V Count

The number of follicles to be created along the V direction.

Points Per Hair

This is the number of points/segments per hair. As this value increases the hair curve becomes smoother. Keep in mind for relatively short stiff hair use fewer points (or Sub Segments), but for long flowing hair use more points, especially if you plan to style the hair curves. For stiff hair that has a detailed shape you may need to use more points (or Sub Segments), but you may also need to use higher Iterations to achieve the desired stiffness.

Passive Fill

The number of passive curves to active (hair) curves. Passive curves interpolate the dynamic behavior of active curves, but are less expensive than simulating every curve. For more information, see "Passive hair curves" on page 16.

Length

The length of the hair in world space units (default grid units in the modeling views).

At a very large scene scale, it might be necessary to type in large values for the length. Gravity is constant, so increasing the length for a large scene scale will result in hair that seems to fall more slowly. If this is the case, then increase gravity on the `hairSystemShape` node until the hair falls at the desired rate. Currently the gravity field for particle and rigid body simulations seems to be calibrated with the sense that cm are around a meter.

2 | Creating hair

Reference > Hair > Paint Hair Tool >

Randomization

The degree of randomization for the placement of follicles along the U and V directions. With a value of 0 there is no randomization and the follicles are lined up. With a value of 1 the follicles are extremely random.

Create Rest Curves

When turned on, this creates a set of Rest curves that are straight and normal to the surface. If the hair is fairly stiff and you want it to assume a non-straight shape (in the absence of external forces like gravity), then you should create and edit Rest curves. For more information, see "Rest Curves/Position" on page 16.

Edge Bounded

When turned on, the follicles are created along the edge of the U and V parameters.

Equalize

Turn this on so when hair is created Maya compensates for uneven mapping between UV space and world space, equalizing the distribution of the follicles so they aren't cluttered at the poles.

Hair > Paint Hair Tool



Use the Paint Hair Tool to add dynamic hair to a NURBS or polygonal surface, to remove hair, or to paint follicle attributes of an existing hair system. For more information, see "Create hair" on page 19 and "Paint hair" on page 53. See also "How Artisan brush tools work" in the Paint Effects, Artisan, and 3D Paint guide.

Hair > Paint Hair Tool >

These are descriptions of the options in the Paint Hair Tool Settings window. For descriptions of the attributes in the Tool Settings editor, see "Artisan Brush Tool Settings" and "Common Artisan Brush Tool Settings" in the Paint Effects, Artisan, and 3D Paint guide.

Paint Modes

These are descriptions of the Paint Modes you can select in the Paint Hair Tool Settings window.

- Create Follicles** Adds follicles to the surface as you paint. The follicles that are created and their appearance are based on the Density, Points Per hair and Hair Length settings in the Paint Hair Tool Settings window.
- To create a new hair system, select Create New from the Hair System drop-down list and then paint on the surface. To paint hair on an existing hair system, select the hair system from the Hair System drop-down list and then paint on the surface.
- Create Passive Follicles** Adds passive follicles to the surface as you paint. Passive follicles draw their attributes and behavior from their neighboring active follicles/curves at the start of the simulation. For more information about passive curves, see "Passive Fill" on page 27.
- Delete Follicles** Removes follicles from the surface as you paint.
- Edit Follicle Attributes** Modifies the follicles you paint based on the settings in the Paint Hair Tool Settings window. Specify which hair system you want to paint or all hair systems in the Hair System drop-down list.

Tips If the hair appears to start "off" the surface, you can paint the Surface Inset attribute.

If you paint Curl Mult, but the hair doesn't become curly or curlier, then the hair system's Clump Curl value is set to 0.5, which means no curl.

- Trim Hairs** As you paint over the hairs they are trimmed based on the Value you specify for the Replace operation in the Paint Hair Tool Attribute Editor. The length that is trimmed is relative to the existing hair Length value.
- Extend Hairs** As you paint over the hairs they are lengthened based on the Value you specify for the Replace/Add operation in the Paint Hair Tool Attribute Editor. The length that is extended is relative to the existing hair Length value.

Paint Hair options

These are descriptions of the options you can select once you've specified a Paint Mode.

2 | Creating hair

Reference > Hair > Paint Hair Tool >

Follicle Attribute

Select the follicle attribute to paint using the Edit Follicle Attributes Paint Mode. Specifically, you can paint Clump Width Mult, Density Mult, Curl Mult, Clump Twist Offset, Color Blend, Braid, Hair Scale, Inclination, Roll, Polar, Surface Inset, Stiffness.

Hair System

Select which hair system to paint.

Output

If Paint Mode is Creating Follicles, then select the type of hair output. For descriptions of hair output types, see "Hair Output" on page 10.

Follicle Density U

If Paint Mode is Creating Follicle, this value represents the number of follicles to create in the U direction.

Follicle Density V

If Paint Mode is Creating Follicle, this value represents the number of follicles to create in the V direction on the surface.

Points Per hair

If Paint Mode is Creating Follicles, this value represents the number of points (segments) each new hair has. As this value increases the hair curve becomes smoother. If the Paint Mode is Trim Hairs or Extend Hairs, this value represents the number of points along the hair affected by the operation.

Hair Length

The length of the hair in world space units (default grid units in the modeling views). See "Length" on page 27.

Follicle Override Color

You can specify a follicle color override if you select Edit Follicle Attributes as the Paint Mode and then select Color Blend as the attribute. You control the value of the Color Blend by adjusting the Value in the Tool Settings editor. A value of 1 means the follicle color overrides the hair system color; whereas a value 0 results in the follicle color having no effect on the hair system color. A value between 0 and 1 results in a blending between the Follicle Override Color and the hair system color.

Hair > Display

Select the curves/position you want to display: Start, Rest, or Current (Dynamic). For descriptions of the curves and positions, see "Choose which hair curves to display" on page 20.

Hair > Set Start Position

Select this to set the position for the Start curves based on the Current Position (dynamic simulation) or the Rest Position. The Start Position represents the position of the hair at the start of the simulation. See "Set curve positions" on page 22.

Hair > Set Rest Position

Select this to set the position for the Rest curves based on either the Current Position (dynamic simulation) or the Start Position. The Rest Position represents the position of the hair when no forces are acting upon it. You can use these curves to influence the shape of the hair. See "Set curve positions" on page 22.

Hair > Convert Selection

Converts the current selection to one of the following: Follicles, Start Curves, Rest Curves, Current Positions, Hair Systems, Hair Constraints, or End CVs. See "Select hair, follicles, curves, and CVs" on page 21.

Hair > Assign Hair System

Assigns the selection to the specified hair system, which can either be a new hair system or an existing hair system. See "Assign a selection to a hair system" on page 23.

Hair > Make Selected Curves Dynamic

Turns the selected hair curves into dynamic curves. For more information, see "Creating other models and effects with hair" on page 18 and "Make curves dynamic" on page 25.

Hair > Delete Entire Hair System

Removes the entire selected hair system and all its components (follicles, curves). For more information, see "Delete hair" on page 26.

2 | Creating hair

Reference > pfxHair node

pfxHair node

This node is created when hair is created with Output set to Paint Effects. This node contains attributes that are common to all pfx shape nodes. It cannot be used directly, but rather should be derived from. For more information about its attributes, see the strokeShape node (see `stroke`).

hairSystemShape node

These are descriptions of the attributes in the hairSystemShape node (also hairSystem node). When modifying these attributes they affect the entire hair system.

Related topics

- ❖ "Select hair, follicles, curves, and CVs" on page 21
- ❖ "Styling hair and modifying the hair look and behavior" on page 51
- ❖ "Play a hair simulation" on page 45
- ❖ "Create wavy, curly hair" on page 83

Simulation Method

Controls what is simulated in the hair system. The following are descriptions of the options in the drop down list.

Off	The hair system is not displayed or updated during the playback of the simulation.
Static	The hair system does not move during the playback of the simulation. But the hair system does update the position of the hairs if the surface is transformed.
Dynamic Follicles Only	The hair system simulates and updates dynamic hairs only during playback of the simulation. Passive hairs are hidden.
All Follicles	The hair system simulates and updates all hairs (dynamic and passive) during playback of the simulation.

Display Quality

This value is the percentage of hairs within clumps to display for interactive draw. This display quality corresponds to the display quality of Paint Effects strokes. The default value is 100.

Clump and Hair Shape

This section contains attributes to control the hair clumps and overall hair shape.

Hairs Per Clump

This is the number of hairs rendered for each Current Position hair curve.

Sub Segments

This determines the number of smoothly interpolated segments at render time. The hermite interpolation smooths the shape of the line, in addition to providing more detail for curls and fine features. The added segments affect the rendered look only and do not affect the dynamic simulation.

Thinning

This controls the proportion of shorter length hairs.

Clump Twist

This is the rotation of the clump group about the primary hair axis.

Bend Follow

This determines how much the rotation of the overall clump follows the primary hair axis. Short straight hair may work better with this value near zero, as the end of wide clumps will blend better when they twist. With this value at 1.0 the cross section of the hair clump will always be perpendicular to the tube direction, which can work well for long relatively thin clumps. When this value is zero the cross section is always perpendicular to the surface normal at the start of the hair clump.

Clump Width

This is the base or maximum width for the dynamic hair groups.

Hair Width

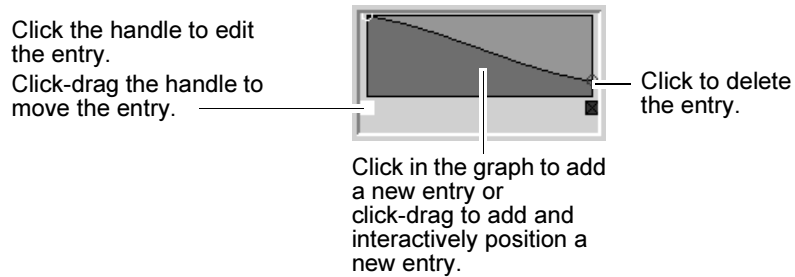
This is the global width for hairs.

Clump Width Scale

Using a ramp (graph) you can define a varied width for hair clumps. Clump Width Scale affects the width from root to tip of the hair clump. The left of the graph is the root and the right is the tip. You might want the hairs within the clump to come to a tip at the end of the clump, in which case the right value should be smaller than the left. This attribute multiplies the Clump Width parameter value, so a value of 1.0 will leave the Clump Width unchanged. If the Clump Width attribute is zero then this parameter will have no effect.

2 | Creating hair

Reference > Clump and Hair Shape



Hair Width Scale

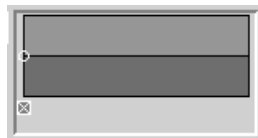
Using a ramp (graph) you can define a varied width for the overall hair shape. Hair Width Scale affects the width from root to tip of the hairs. The left of the graph is the root and the right is the tip. This attribute multiplies the Hair Width parameter value, so a value of 1.0 will leave the Hair Width unchanged, but if the Hair Width attribute is zero then this parameter will have no effect.



See Clump Width Scale for a description of how to edit the graph.

Clump Curl

Using a ramp (graph) you can define a varied curl for hair clumps. Clump Curl controls the rate of curling about the primary axis of each hair clump. The left of the graph is the root and the right is the tip. The mid value of the ramp (0.5) represents no twist while values greater than that will result in positive twisting and smaller values will cause twisting in the reverse direction.



See Clump Width Scale for a description of how to edit the graph.

Clump Flatness

Using a ramp (graph) you can define a varied flatness for hair clumps. Clump Flatness affects the flatness of the clump group from root to tip. The left of the graph is the root and the right is the tip.



See Clump Width Scale for a description of how to edit the graph.

Dynamics

This section contains attributes to control the dynamics of the hair curves.

Iterations

This controls the number of iterations per time step of the hair solver. This affects hair Stiffness and Length Flex, as well as the accuracy of collisions. Large values are required for very high stiffness. A large value will also increase the time required by the solver.

Length Flex

The amount the hair can stretch along its length.

Stiffness

The amount the hair can flex with regard to the rest position.

Stiffness Scale

Stiffness Scale affects the stiffness from root to tip of the hair. The left of the graph is the root and the right is the tip. Typically the root of a hair is thicker and therefore stiffer than the tip. This attribute multiplies the Stiffness parameter value, so a value of 1.0 will leave the Stiffness unchanged, but if the Stiffness attribute is zero then this parameter will have no effect.

Drag

This simulates friction with the air, in addition to helping to stabilize the simulation. When the Drag value is 1.0 the hair behaves as if it has no inertial motion or follow through. It will move as if it is in thick fluid.

Damp

This dampens the motion of the hair with respect to itself. When this value is high the hair tends to move with the parent object, but will not inherit much of the momentum due to this motion. This can help both stabilize the simulation and reduce dynamic behavior due to motion of the base surface. This is critical when you have curved Rest Positions in moderately stiff hair. This can also be adjusted per follicle for problem hairs, such as ones that develop oscillations that won't relax; see "Damp" on page 42 in the follicleShape node section.

Friction

This simulates friction on contact with other surfaces.

Gravity

A built-in downward force in the y-direction simulating gravity.

2 | Creating hair

Reference > Collisions

Dynamics Weight

This is the scale factor for the effect of attached dynamic fields on the hair motion.

Start Frame

This is the frame after which the simulation will run. Nothing will play back for this object prior to Start Frame.

Current Time

This is the current time used for the hair solution. By default, it is given an incoming connection from the main time node. This can be replaced with some other connection (such as, from an expression or param curve) and then the solving is done based on that time value. There must be some incoming connection in order for the Hair System object to play back.

Collisions

This section contains attributes to control the collision properties of the hair system. For information on how to set up hair collisions, see "Make hair collide" on page 59.

Collide

If turned on then the hair system collides with the connected objects.

Collide Over Sample

Use this to adjust the quality collision sampling. Larger values will help keep hairs from pushing through surfaces.

Collide Width Offset

This value is added to Clump Width before determining collisions. The amount is relative to the clump width. It can be used to handle situations where there is some interpenetration, or where you have passive hairs that are outside the boundaries of active clumps. In cases where the hairs collide too far off an object, you can use negative values to allow a little interpenetration of clumps.

Self Collide

If this is turned on then the hair system simulates hair to hair interaction.

Repulsion

When Self Collide is turned on, this controls how much or how little the hairs repel each other.

Static Cling

When Self Collide is turned on, this controls how much or how little the hairs stick together.

Num Collide Neighbors

When Self Collide is turned on, this controls the number of hairs each hair collides with.

Collide Ground

If this is turned on then the hair system collides with an infinite plane at the ground height. This collision does not impact the speed of the solution, unlike geometry collisions.

Ground Height

When Collide Ground is turned on, this determines the height of the ground plane.

Draw Collide Width

If this is turned on then circles are drawn around each line representing its width used for collision.

Width Draw Skip

Use this to adjust the quality of the tube collide width drawing. A value of zero will cause a circle to be drawn for every segment of the tube, which may clutter the display for a tube with many segments.

Turbulence

This section contains attributes to control the turbulence properties of the hair system.

Intensity

Increasing this will increase the amount of force applied by the turbulence.

Frequency

Lowering this will make the turbulence vortices larger. This is a spacial scale factor on the turbulence function and has no effect if the turbulence strength is zero.

Speed

The rate at which turbulence pattern changes over time.

Shading

This section contains attributes to control the hair shading or color.

2 | Creating hair

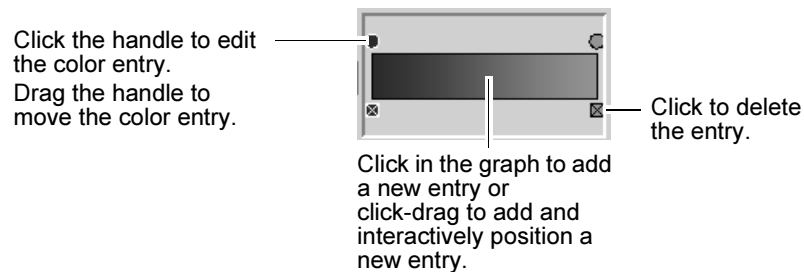
Reference > Shading

Hair Color

This is the base color for hairs. The final color used is determined after the Hair Color Scale and randomization parameters are applied. Also individual hair clumps may override the Hair Color.

Hair Color Scale

Hair Color defines the global color of the hairs from root to tip. The left of the graph is the root and the right is the tip.



Translucence

This allows light to filter through hair for a softer effect.

Specular Color

This is the input color for specular highlights.

Specular Power

This allows light to filter through hair for a softer effect.

Cast Shadows

This causes the hair to cast shadows (depth map only).

Color Randomization

Use these settings to randomize the hair color.

Diffuse Rand	A diffuse brightness randomization between hairs in a clump.
Specular Rand	A specular brightness randomization between hairs in a clump.
Hue Rand	A random deviation in hue of hairs.
Sat Rand	A random deviation in color saturation of hairs.
Val Rand	A random deviation in brightness value of hairs.

Displacements

This section contains attributes to control the displacement properties of the hair.

Curl

This is the amount of curl displacement applied to each hair. The amount of displacement is relative to the hair width. The Clump Curl creates large scale curls about the clump center, while this attribute creates curls about the direction of individual hairs.

Curl Frequency

This is the rate of curl. Larger values result in more curls. The amount of displacement is relative to the hair width

Noise

This is the amount of perlin noise displacement of the hair. The amount of displacement is relative to the hair width. This can create a knotted, kinky look to the hair.

Noise Frequency

This is the spacial scale of the noise offset along hair. Increasing this value results in finer kinks in the hairs.

Multi Streaks

This section contains attributes to control the Multi Streaks shading for Paint Effects strokes. These attributes only apply if your hair output includes Paint Effects (see "Create hair" on page 19).

Multi Streaks

Multi Streaks is the number of added sub hairs for each hair in a clump. These hairs will share the same shape and shading as the base hair they are derived from. They are created at render time and are simple duplicates, and therefore do not take up any shape computation. This allows you to have a great number of (Paint Effects) tubes and yet render them in a reasonable amount of time.

Multi Streak Spread1

The maximum offset for added hairs relative to the clump width.

Multi Streak Spread2

The maximum offset for added tubes relative to the clump width at the tube tip.

2 | Creating hair

Reference > follicleShape node

Light Each Hair

Render times can be much faster if you share the same illumination for each hair in a Multi Streak. If the Multi Streak spread is relatively large or self shadowing between hairs within a Multi Streak group is desired then Light Each Hair should be turned on. Also turning this on could avoid popping artifacts in situations with moving hard-edged shadows.

follicleShape node

These are descriptions of the attributes in the Follicle Attributes section of the *geometryFollicleShape* node, where *geometry* is the type of geometry the hair is attached to, such as *psphere*. When modifying these attributes they only affect the selected follicle(s). (Also known as the follicle node.)

The Per Follicle Overrides attributes are modifiers of the related hair system attributes and the visible result will be affected by both attributes (in particular in the case of the Mults).

Related topics

- ❖ "Select hair, follicles, curves, and CVs" on page 21
- ❖ "Modify hair follicles" on page 55
- ❖ "Paint hair" on page 53
- ❖ "Create ponytails and braids" on page 86

Parameter U

This is the U parameter value on the surface.

Parameter V

This is the V parameter value on the surface.

Rest Pose

This specifies how the rest position of the hair used by dynamic computations is determined. It may be straight, based on the start curve position or a separate input curve may be used. When the *Start Minus Gravity* option is selected, Maya attempts to compute a rest position based on gravity and the hair stiffness such that the hair is in dynamic equilibrium at the start of the simulation. If the *Same As Start* option is selected then the hair will fall at the beginning if there is any gravity and the hair is not totally stiff.

Simulation Method

This specifies how to apply dynamic motion to the hair. If it's set to *Static* then no dynamics are computed for the hair. *Dynamic* computes the hair position based on forces and collisions. *Passive* moves it by interpolating the motion of neighboring dynamic hairs, which can be an efficient way of simulating masses of hair in self collision.

Start Direction

This determines the initial direction that hair emits from the follicle. This is used when determining rest deflections, as well as when increasing Sub Segments on the hair system. If the Rest Position is straight and this is set to *Start Curve Base*, the hair will try to assume a straight line based on the first segment of the Start curve. If *Surface Normal* is selected then the hair would instead move towards a line coming straight out of the surface. Also if Surface Normal is selected, the Sub Segments in the hair system will refine such that the root of the hair is normal to the surface.

Flip Direction

If this is turned on the hair is emitted from the opposite side of the input surface.

Point Lock

This specifies where the hair is attached relative to the start position. You can constrain the base (like a normal hair), both ends (like a rope attached at either end) or with no attachments (the hair will fall like a loose string that is dropped). You can animate this parameter to detach a hair during a simulation.

Degree

The degree of the final generated output curve.

Braid

When turned on the hairs attached to the selected follicles are braided.

Per Follicle Overrides

These attributes are applied to the selected follicle(s) and may override, multiply by, or blend with a corresponding hair system attribute.

Dynamics Overrides

These are descriptions of the dynamic-related attributes.

Override Dynamics

When turned on Maya uses the local hair settings rather than the global hair system settings. This is off by default.

2 | Creating hair

Reference > Per Follicle Overrides

Collide

When turned on Maya collides the hair with geometry if the global hair system has collisions. This is on by default.

Stiffness

The amount the hair can flex with regard to the rest position.

Length Flex

The amount the simulated hair can stretch along its length.

Damp

This overrides the Damp value on the hair system. It can be used to stabilize problem hairs. See "Damp" on page 35 in the hairSystemShape node section for a detailed description.

Render Overrides

These are descriptions of the render-related attributes.

Sample Density

This controls the number of points to sample along the input start and rest position curves when generating the output hair data to pass to the simulation node. A value of one will cause the simulation hair to have the same number of poly line segments as the curve has CVs. A value of 2.0 will double the number of segments, while a value of 0.0 will result in a single segment. This can dramatically affect the speed and quality of the simulation.

Clump Width Mult

This multiplies the global Hair Clump Width on the hair system node. If the Hair Clump Width on the hair system is zero, then this has no effect. This will also affect the overall number of hairs within a clump, such that the density per unit remains roughly constant. The default is 1.

Density Mult

This multiplies the number of hairs relative to the global Hair Per Clump on the hair system node. If the Hairs Per Clump on the hair system is zero, then this has no effect. The default is 1.

Curl Mult

This multiplies the curl rate relative to the global hair curl attribute on the hair system node. If the curl on the hair system is zero, then this has no effect. The default is 1.

Clump Twist Offset

This offsets (adds or subtracts) from the global Clump Twist attribute on the hair system node. The default is zero.

Color Blend

This allows you to set a different base color per hair clump. The attribute value determines the proportion the global (hair system) color is blended with the local (follicle) color attribute. If the value is zero then the hair color is determined by the global hair color on the hair system node. If the value is 1.0 then the hair color is entirely the color attribute on this node. Values between 1.0 and 0 blend the two color values. The default is zero.

Color

This is the input color to the hair follicle.

2 | **Creating hair**

Reference > Per Follicle Overrides

3 Simulating hair

How do I? Play a hair simulation

To see how hair and dynamic curves react when forces are applied to them, play the simulation. To make changes to the hair system or follicle attributes while the simulation is running, use Interactive Playback.

To tweak the hair simulation, adjust the Stiffness, Iterations, and even Gravity attributes in the Dynamics section of the hairSystemShape node. The Damp value can be adjusted to relax oscillating curves on non-straight hair. See "Dynamics" on page 35.

Note There may be performance issues with playback if output is set to NURBS curves and the number of curves is high. As a workaround to provide faster interactive feedback, create hair with output set to Paint Effects and NURBS curves, and hide the group containing the output curves. Then in the hairSystemShape node, set the Hairs Per Clump to 1 and the Clump Width to 0.

To play the simulation

- 1 Increase your frame range, for example, to 1000.
- 2 Select Hair > Display > Current Position.
- 3 Click the Play button to play the simulation. Watch the hair react to dynamic forces as the simulation plays.

To play and interact with a hair simulation

- 1 Increase your frame range, for example, to 10000.
- 2 Select Solvers > Interactive Playback.
- 3 Interact with the hair simulation while it's running, including modifying dynamic hair system and follicle attributes, as well as transforming the surfaces to which the hair or dynamic curves are attached to see how the hair behaves.
- 4 Click the Stop button to stop the simulation.

Use hair caches

You simulate hair by playing through the time slider (see "Play a hair simulation"). You can create a cache file to store all the positions of the hair curves during the simulation. This cache lets you quickly preview the

3 | Simulating hair

How do I? > Create a hair cache

results of the hair simulation without having to render. This offers many benefits, including scrubbing back and forth in the time slider and re-using a cache so you don't have to solve at render time.

The main purpose of the cache is for batch render so:

- you can do distributed rendering and have the simulation match exactly.
- you can do batch rendering without Maya Unlimited licenses (Hair simulation requires Maya Unlimited).

See "Rendering using distributed render" on page 80.

Specifically you can:

- "Create a hair cache"
- "Append to a hair cache"
- "Truncate a hair cache"
- "Delete a hair cache"

Create a hair cache

To create a hair cache

- 1 Select the hair system.
- 2 Do one of the following:
 - Select Hair > Create Cache.
 - Select Hair > Create Cache > , set the time range and sampling settings and then click Create.

Cache Time Range Select a time range for the cache. Use the time range as specified in the Render Globals or the Time Slider, or set a new time range with the Start/End option.

Sampling Specify either Over or Under for sampling and then set a Rate value for sampling. The default value for Rate is 1.

Append to a hair cache

You can use Append to Cache to add the specified frames to the existing cache. If the range of frames you specify occurs earlier than the last frame in the cache, the overlapping frames are overwritten. You may want to append to a hair cache if you decide to render more frames than you originally had cache for.

3 | Simulating hair

How do I? > Truncate a hair cache

You might use the “append and truncate a cache” workflow if you're hand-tweaking the behavior of your hair. For example, cache a simulation for a while, truncate it at or before the frame where some hairs do something you don't want, modify some attributes, cache for a while again until you notice some behavior that you want to change. See “To truncate a hair cache” on page 47.

To append to a hair cache

- 1 Select the hair system.
- 2 Select Hair > Append to Cache > . The Append to Hair Cache Options window appears.
 - Append Time Range Select a time range to append to the cache. Use the Current Time (applies a single frame), Current Time to Time Slider End, or set a new time range with the Start/End option.
 - Sampling Specify either Over or Under for sampling and then set a Rate value for sampling. The default value for Rate is 1.
- 3 Set the append options and then click the Append button.

Maya appends the new cache information to the existing cache file for the hair system according to the options you set.

Truncate a hair cache

You may want to truncate a cache for one of the following reasons:

- If your modifications only start affecting the behavior of your hair dynamics partway through the cache, and you only want to re-cache from the point where it changes.
- If you don't want or need the tail end of your simulation.

To truncate a hair cache

- 1 Select the hair system with the cache you want to truncate.
- 2 In the Time Slider move to the frame where you want to truncate the cache.
- 3 Select Hair > Truncate Cache. Maya deletes the cache from the current frame forward.

Delete a hair cache

You may want to delete your hair cache for one of the following reasons:

3 | Simulating hair

Reference > Hair > Create Cache >

- If you modify a dynamic hair simulation after caching, you must disable or delete the cache so that the modifications appear when you play the hair simulation.
- You must re-create the cache before you (distributed) render your hair.
- You can delete the cache to free up disk space.

To delete a hair cache

Select Hair > Delete Cache. The existing hair cache is removed.

Reference Hair > Create Cache

Creates a cache of the hair simulation. You can modify the cache creation settings in the Create Cache Options window by selecting Hair > Create Cache > . For more information, see "Use hair caches" on page 45.

Hair > Create Cache >

These are descriptions of the options in the Create Cache Options window.

Cache Time Range

Select a time range for the cache. Use the time range as specified in the Render Globals or the Time Slider, or set a new time range with the Start/End option.

Sampling

Specify either Over or Under for sampling and then set a Rate value for sampling. The default value for Rate is 1.

Hair > Append to Cache

Adds the specified frames to the existing cache. You can modify the settings in the Append to Hair Cache Options window by selecting Hair > Append to Cache > . For more information, see "Append to a hair cache" on page 46.

Hair > Append to Cache >

These are descriptions of the options in the Append to Cache Options window.

3 | Simulating hair

Reference > Hair > Append to Cache >

Append Time Range

Select a time range to append to the cache. Use the Current Time (applies a single frame), Current Time to Time Slider End, or set a new time range with the Start/End option.

Sampling

Specify either Over or Under for sampling and then set a Rate value for sampling. The default value for Rate is 1.

Hair > Truncate Cache

Cuts off the cache at the specified frame in the Time Slider. See "Truncate a hair cache" on page 47.

Hair > Delete Cache

Clears out the existing hair cache. See "Delete a hair cache" on page 47.

3 | **Simulating hair**

Reference > Hair > Append to Cache >

4 Modifying hair

About

Styling hair and modifying the hair look and behavior



Image created by Duncan Brinsmead. Model created by Inspeck.

You can modify the hair system as a whole by adjusting attributes in the `hairSystemShape` node, such as clump width, color, stiffness, and gravity. You can override hair system attributes at the follicle level in the `follicleShape` node, such as hair color.

You can use the Paint Hair Tool to paint more hair or paint to delete follicles, or even paint follicle attributes.

You can resize the hair using the Hair Scale Tool.

To style the hair and give it shape, you can modify hair curves, including bending and smoothing curves. You can also use fields to attract hair (acting as the hand of the hair stylist), and constraints to hold hair in place, such as a ponytail or a clasp.

To use a field to style hair, select the hair system first and then create the field. You can also use the dynamic Relationship Editor for the enable forces (and collision objects) for the `hairSystemShape` node.

To establish hair collisions with surfaces, such as the face, scalp, neck, or shoulders of a model, use collision constraints.

Here are a few short examples of what you can do:

4 | Modifying hair

How do I? > Related topics

- for a ponytail, create rest curves and style them with fields (Newtons) and then use constraints to hold the hair in place
- for a beehive updo, style the hair curves using fields (Vortex and Newton) and then apply constraints
- to create bangs/fringe, use the Paint Hair Tool to paint a line of bangs/fringe, and then trim the hair length (CVs) if too long
- to create “streaks” of hair color, change the hair color of selected follicles on the follicleShape node, and be sure to adjust the Color Blend value
- to turn hair clumps into strands of ivy or beads for special effects, assign a Paint Effects brush to a hair system

For detailed workflows and suggestions for creating a variety of hairstyles, including curly, wavy hair, and braids and ponytails, see “Sample hairstyles” on page 83.

Related topics

- ❖ “Paint hair” on page 53
- ❖ “Modify the hair system” on page 54
- ❖ “Modify hair follicles” on page 55
- ❖ “Adjust the hair length” on page 55
- ❖ “Edit hair curves” on page 56
- ❖ “Braid hair” on page 58
- ❖ “Make hair collide” on page 59
- ❖ “Set up hair constraints” on page 61
- ❖ “Assign a Paint Effects brush to Hair” on page 65
- ❖ “Set up hair shading” on page 75

How do I? Style the hair and modify behavior

Consider the following to create a basic hair shape and style the hair:

- lengthen or shorten hair (Hair > Scale Hair Tool)
- add more follicles or delete follicles, trim or extend hairs using the Paint Hair Tool (see “Hair > Paint Hair Tool” on page 28 and “Paint hair” on page 53)
- edit hair curves by bending, smoothing, curling, and straightening (“Edit hair curves” on page 56)

4 | Modifying hair

How do I? > Change the look of the hair

- use fields to style hair (see the Dynamics guide for information about Fields, Newton field, Vortex field, and more)
- use constraints to hold hair in position, such as to the head, or in clasps, ponytails and updos (“Set up hair constraints” on page 61)
- for special effects, assign a Paint Effects brush to hair (“Assign a Paint Effects brush to Hair” on page 65)

To control how the hair style reacts to forces, like gravity, use the following:

- Fields
- hair system Dynamics attribute, such as Stiffness, Iterations, or even Turbulence for simulating blow drying hair
- follicle Dynamics Overrides attributes, such as Stiffness, Length Flex and Damp
- collisions (“Make hair collide” on page 59)
- collision constraints (“Work with collision hair constraints” on page 64)

Change the look of the hair

To modify the look of hair, for example, curly or straight, thick or thin, use the following:

- Paint Hair Tool (see Paint hair)
- Clump and Hair Shape attributes (hairSystemShape node) (“Modify the hair system” on page 54)
- Displacement attributes for curl (hairSystemShape node)
- Shading attributes for hair color (hairSystemShape node) (see also “Set up hair shading” on page 75)
- Multi Streaks attributes for variance in hair color and to add density (Paint Effects hair only) (hairSystemShape node)
- Braid attribute (follicleShape node) (“Braid hair” on page 58)
- Set up hair self-shadowing on lights

Paint hair

You can use the Paint Hair Tool to paint the following:

- add new hair follicles to a new or existing hair system
- remove hair follicles
- modify follicle attributes
- trim hairs

4 | Modifying hair

How do I? > Modify the hair system

- extend hairs

For more information, see "Hair > Paint Hair Tool" on page 28.

To paint using the Paint Hair Tool

Before painting, be sure to be either in the Start or Rest Position.

- 1 Select either the surface or the hair system you want to paint.
- 2 From the Dynamics menu set, select Hair > Paint Hair Tool > . The Paint Hair Tool Settings window appears. For descriptions of the options in the Paint Hair Tool Settings window, see "Hair > Paint Hair Tool" on page 28.

Since the Paint Hair Tool is an Artisan paint tool, the Artisan Brush Tool Settings editor appears as well. See "Artisan Brush Tool Settings" on page 297 in the Paint Effects, Artisan, and 3D Paint guide.

- 3 Select a Paint Mode from the Paint Hair Tool Settings window.
- 4 Specify the appropriate settings available with the selected Paint Mode.
- 5 Paint on the surface.

Notes If you are painting the Inclination attribute, go to the start frame before painting.

Modify the hair system

To modify all the hair at once, edit the hair system.

To edit the hair system attributes

Before editing, be sure to be either in the Start or Rest Position.

- 1 Select the hair system in the Outliner or Hypergraph. (Window > Outliner, Window > Hypergraph)
- 2 Modify the settings in the hair system's Attribute Editor. For descriptions of the hair system attributes, see "hairSystemShape node" on page 32.
- 3 To see the changes you may have to play the simulation. See "Play a hair simulation" on page 45.

Modify hair follicles

If you want to edit attributes for a selection of follicles, do one of the following:

4 | Modifying hair

How do I? > Adjust the hair length

- Edit the value in the Channel Box. All selected nodes of the same type will be affected by the edit. For example, turn on Braid for selected follicles.
- Edit the nodes in the Attribute Spreadsheet. (Window > Attribute Spreadsheet)

Editing in the Attribute Editor only affects a single follicle, the lead selection.

To edit the attributes of selected follicles

Before editing, be sure to be either in the Start or Rest Position.

- 1** Select the desired follicle(s). See "Select hair, follicles, curves, and CVs" on page 21.
- 2** Modify the settings in the Attribute Editor, Channel Box or Attribute Spreadsheet. For descriptions of the follicle attributes, see "follicleShape node" on page 40.
- 3** To see the changes you may have to play the simulation. See "Play a hair simulation" on page 45.

Note While you can paint Hair Scale, Inclination, Roll, Polar, and Surface Inset, you cannot edit them in the follicle's Attribute Editor. These attributes affect the transform on the Start curve. If you select the Start curve then you can easily edit the transform values. Inclination, Roll, and Polar are rotate XYZ. Surface Inset is the Z translate. Scale is the scale XYZ on the follicle node.

Adjust the hair length

You can make hair longer by either painting (Extend Hairs) or scaling the hair system. For information about painting, see "Paint hair" on page 53 and "Hair > Paint Hair Tool" on page 28.


The Scale Hair Tool adjusts the scale value for each follicle's transform. It scales such that $scaleX = scaleY = scaleZ$. (If you had a non-proportionate scale to start with, using the Scale Hair Tool would make it proportional.) The Start and Rest curves are parented under the follicle transform so they inherit this scale.

Keep in mind the Scale Hair Tool does not vary either the amount of segments or the stiffness. This will make the hair appear stiffer as you increase the length. The relative stiffness of the hair will be the same, although it will fall relatively slower and not as far, due to gravity not appearing the same effect at different scales.

4 | Modifying hair

How do I? > Edit hair curves

To scale hair

- 1 Select either individual follicles or the hair system. See “Select hair, follicles, curves, and CVs” on page 21.
- 2 Do one of the following:
 - Select Hair > Scale Hair Tool.
 - On the Hair shelf, click the Scale Hair Tool  button. (If the Hair shelf is not visible, see *Load the default shelves* in the Basics guide.)
- 3 Drag to the right to lengthen the hair or drag to the left to shorten the hair.

Edit hair curves

Styling the hair is usually performed on the Start or Rest Position NURBS curves. The simplest way is to edit the Start Position curves. For example, play the simulation to let the hair fall and when it stabilizes, select Hair > Set Start Position from Current. For more refined editing of the Start Position, switch the display to the Start Position and use the curve editing tools. See “Hair curve editing tools.”

You can display both the Paint Effects “hair clumps” at the same time as the Start Position of the NURBS curves (Hair > Display > Start and Current). If you are at or near the start simulation frame, the Paint Effects display will update as you update the Start Position curves.

If the hair is fairly stiff and you want it to assume a non-straight shape (in the absence of external forces like gravity), then you can create and edit Rest Position curves. To create Rest curves, select the desired hairs and select Hair > Set Rest Position > From Current (or From Start). You can then display the Rest Position and edit those curves. You can only see the effects when you play the simulation.

Hair curve editing tools

You can lock curve length and reshape the curve(s) by selecting and moving the end CV(s). In addition to locking length, you can reshape curves using other items in the Modify Curves menu, including Straighten, Smooth, Curl, Bend, and Scale Curvature.

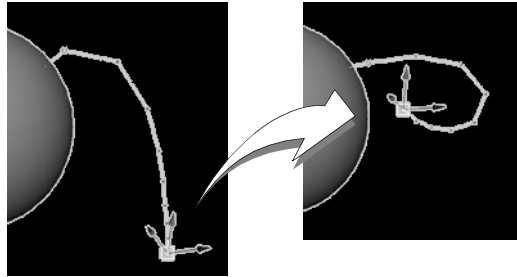
These same tools are available for editing NURBS curves. For detailed descriptions, see:

- ❖ *Straighten, smooth, curl or bend a curve*
- ❖ Edit Curves > Modify Curves > Lock Length
- ❖ Edit Curves > Modify Curves > Unlock Length
- ❖ Edit Curves > Modify Curves > Straighten

4 | Modifying hair

How do I? > Braid hair

- ❖ Edit Curves > Modify Curves > Smooth
- ❖ Edit Curves > Modify Curves > Curl
- ❖ Edit Curves > Modify Curves > Bend
- ❖ Edit Curves > Modify Curves > Scale Curvature



After locking the length of the curve, reshape the curve by selecting and dragging the end CV using the Move Tool.

To use Lock Length while editing curves

- 1 Switch to Start or Rest Position. (Hair > Display >)
- 2 Select the curve(s) and then convert the selection to end CVs. (See "Hair > Convert Selection" on page 31.)
- 3 Press the l (letter) key to turn Lock Length on while editing curves.
- 4 Release the l (letter) key to turn Lock Length off.

To straighten, smooth, curl or bend hair curves

- 1 Switch to Start or Rest Position. (Hair > Display >)
- 2 Select the curve(s) or CV(s).
- 3 Select Hair > Modify Curves and then select the desired option (Straighten, Smooth, Curl, Bend, Scale Curvature).
- 4 Repeat step 3 until you've achieved the desired look.

Braid hair

You can either braid individual follicles or all of them. Since the Braid attribute is in the follicleShape node, follicles must be selected.

4 | Modifying hair

How do I? > Braid hair



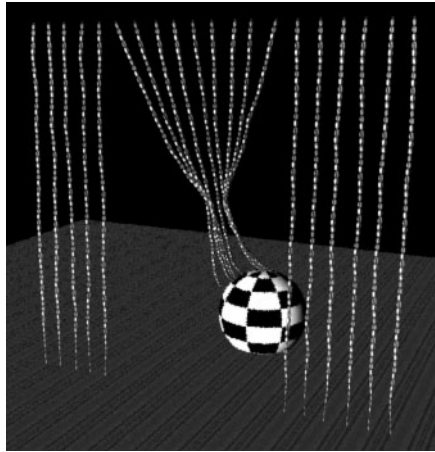
Image created by Duncan Brinsmead

To braid hair

- 1 Select the desired follicles. See "Select hair, follicles, curves, and CVs" on page 21.
- 2 Do one of the following:
 - If you are braiding individual follicles, select the follicle(s) and in the Channel Box, set the Braid attribute to on. Alternatively, paint the Braid attribute on the desired follicles. (See "Hair > Paint Hair Tool" on page 28.)
 - If you are braiding the entire head of hair, then select all the follicles (see "Select hair, follicles, curves, and CVs" on page 21) and change the Braid setting to "on" in the Channel Box. This affects all the selected follicles. (If you don't see Braid in the Channel Box, then in Outliner ctrl + click a follicle and then shift + click it.)
- 3 For realistic looking braids, adjust the settings for the other Render Attributes.

For more detailed information and workflow suggestions for braiding hair, see "Create ponytails and braids" on page 86.

Make hair collide



Ball collides with beaded curtain made of hair curves

You can make hairs in a hair system collide with themselves and with other objects. As an alternative or in addition to setting objects to collide with hair, you can use hair constraints that act as implicit collision objects. These can be helpful if hairs are getting stuck in surfaces, since these implicit collision objects are volumes, not shells. Also, you can set the collision object constraints to affect specific hair curves, whereas Make Collide and the other collision options affect the entire hair system. The combination of collision constraints and geometry collisions can provide robust collision, while at the same time preserving fidelity of the collide object surface. For more information about the Collide Sphere and Collide Cube implicit collision objects, see "Set up hair constraints" on page 61.

Note Iterations (Dynamics) increases the number of collision tests. A setting of 8 does twice as many as 4. This can improve the results of collisions in some cases, but will also slow down the simulation calculation. If you increase Iterations you need to lower Stiffness to compensate.

Fine tune collisions

If hairs are getting stuck in colliding surfaces, consider the following:

- Avoid sharp or open edges. Rounded, closed objects collide better with hair. The collisions are with discreet points (like particles), not lines, so thin edges can slice between vertices. The more CVs there are on the hair the more likely it is to collide with a small edge. The number of hair CVs is determined by the number of CVs on the Start

4 | Modifying hair

How do I? > Fine tune collisions

curve times the Sample Density on the follicle node. Collide Oversample values of 1 and 2 will insert extra midpoint CVs at collide time.

- If the effective collision width is zero then hairs are less likely to fall through surfaces. The effective collision width is:

$\text{Clump Width} * \text{Clump Width Scale} + \text{Hair Width} + \text{Collide Width Offset}$

By making the Collide Width Offset a large negative number, such as -1000, you can force the collision width to always be zero. This will cause hair clumps to penetrate half way into surfaces. However they will be less likely to fall through a surface.

- Increasing the Collide Oversample value can help. Collide Oversample values greater than 2 behave in a different manner. Values of one or two insert new test points between the simulation CVs. This is good when there are not enough CVs on the curve to catch collisions with thin edges. For values greater than this the extra sample points are in a ring about the CV center. This is better for handling wide hair clumps and avoiding sticking. So to avoid zero width hair clumps being sliced by thin edges, use values of 1 or 2; making the Collide Width Offset negative in this case further helps. To better handle wide clumps try Collide Oversamples of 3 or greater.

To make hair collide with the ground

- 1 In the hair system's Attribute Editor, turn on Collide Ground in the Collisions section. The "Ground" is the ground plane (or the grid).
- 2 Optionally, adjust the Ground Height value, which is relative to the ground plane.

To make hair collide with objects

- 1 Select the hair system. (Window > Outliner)
- 2 Shift-click to select the object or surface you want the hair to collide with.
- 3 Select Hair > Make Collide. A geoConnector node is added to your collision object.

If your collisions are not working, make sure Collide is turned on in the hair system Attribute Editor. For more information, see "Collisions" on page 36.

If your hair is penetrating the collision object, then you can try the following:

- Increase the Tessellation value in the collision object's geoConnector node.

- Increase the Collide Over Sample value in the Collisions section of the hairSystemShape node.

To make hairs collide with themselves

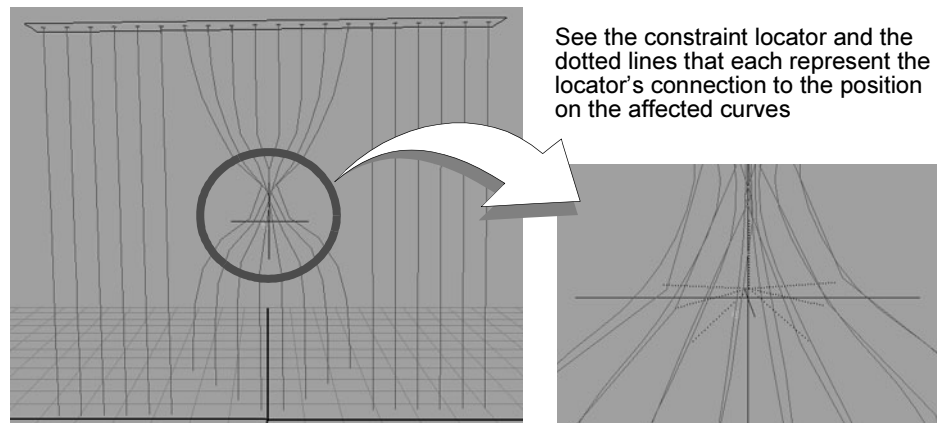
- 1 In the hair system's Attribute Editor, turn on Self Collide in the Collisions section.
- 2 Adjust collision settings, including the Collide Width Offset.

Set up hair constraints

Use constraints to style hair curves. For example, a constraint could act as a clasp holding hair back or in a ponytail. There are various types of constraints you can create: Rubber Band, Stick, Transform, Hair to Hair, Hair Bunch, Collide Sphere and Collide Cube. For descriptions of the constraint types, see "Hair constraint types" on page 63. The last two constraint types are implicit collision constraints and work differently than the other constraint types; see "Work with collision hair constraints" on page 64.

When you create a constraint, the constraint is set to affect the selected hair curves. The identification of these hair curves is stored in the curveIndices attribute in the hairConstraint node. The ID represents the index of the hair (UV grid location) on the hair system.

At the start frame the simulation determines the nearest points on the constrained curves to the constraint node position. If the current frame is less than or equal to this start frame you can move the constraint node and the connection to the nearest points updates. As the simulation runs the constraint works only on this initial set of points, not the entire curve. The constraint type determines how the simulation deals with this set of points.



4 | Modifying hair

How do I? > Hair constraint types

This ensures the constraints don't apply any force to the hairs at the start of the simulation, but instead constrain the simulation as it progresses. In general you should apply constraints after modeling and determining the hair start positions and shapes. If the model's position at the simulation start frame is to be edited or to be set up for different scenes, you might want to group the constraints under a hair follicle node or under the object transform so that the relative position to the hair at the start frame doesn't change (since the constraint is always defined relative to the Start Position, with the exception of the Hair Bunch constraint).

The constraint acts by applying forces to the set of points. The amount of force applied is scaled by the constraint's Stiffness attribute. There is also a Glue Strength attribute that determines a threshold beyond which the attachment of the constraint to a point is broken. The point is glued to the constraint at the start frame. The moment the force being applied by the constraint exceeds the glue strength the constraint breaks and the point becomes unconstrained for the rest of the simulation. A glue strength of 1 is infinitely strong and will never break. The strength required for a constraint to snap in the middle of a simulation is touchy and may require some experimentation with different glue values (between 0 and 1) for the break to occur at a desired point (if desired, you could animate the glue strength from 1 to 0).

Since a constraint only affects one point on each of the selected curves, you may want to apply several constraints located at different positions to the same set of curves in order to constrain multiple points on those curves.

To set up a hair constraint

- 1 Select the desired hair curves.
- 2 Select Hair > Constraint and then select the desired constraint type. See "Hair constraint types."
- 3 Set the constraint attributes in the hairConstraintShape node. For descriptions of the constraint attributes, see "hairConstraintShape node" on page 72.

Hair constraint types

These are descriptions of the constraint types.

Rubber Band

This is like attaching rubber bands from the constraint to the point set. The length of each rubber band is the distance from the constraint to the point at the start frame. If the distance between a point and the constraint becomes greater than the rubber band length a force is applied pulling it toward the constraint.

4 | Modifying hair

How do I? > Hair constraint types

Stick

This is like attaching sticks from the constraint to the point set, where the sticks may rotate freely about the constraint center. This is similar to the Rubber Band constraint, except that when the distance between the constraint and points is less than the start distance a repulse force is also applied (in addition to the attractive force when the distance is greater). This tends to keep all the constrained points at a fixed distance (the distance at the start frame) from the constraint center.

Transform

This is like constraining the points to a block of jelly at the start frame. Unlike the Stick constraint, when the constraint node is rotated or scaled it will pull along the constrained points. The transform on the constraint node is effectively the transform for this block of jelly. This is useful when constraining hair to fall along a contact point, like a shoulder. Also this can be used to simulate hair being grabbed and twisted by a hand. If you animate the constraint's scale the hair can be pulled together or pushed apart.

Hair to Hair

This allows you to bind hairs together (like with a ribbon) where the hair group is free to move with respect to the constraint position. This is like a Stick constraint where the actual constraint is free to move with the hair. The constraint position is only referenced at the start frame, after which the internally used constraint is dynamically updated.

Hair Bunch

This can help create body to the hair as it animates in a fashion similar to self collision but with much less computation. The initial set of points nearest the constraint will repel each other where they overlap (according to the clump widths). There is also a slight static cling where the points stick together slightly when they touch. If the hair clumps overlap at the start frame they may suddenly push apart (unlike the other methods, which have no force at the start of a simulation). You could run the simulation until it stabilizes then set the Start Position to handle this problem.

Collide Sphere

Collide Cube

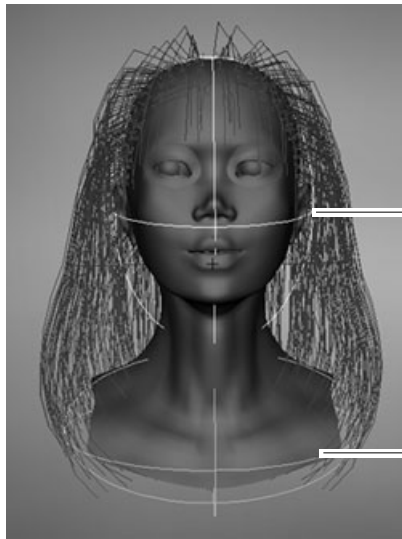
Inserts a sphere or cube that behaves as an implicit collision object. Transform the sphere or cube as needed. For more information, see "Work with collision hair constraints."

4 | Modifying hair

How do I? > Work with collision hair constraints

Note If hair does not settle well or bounces on a Collide Sphere or Collide Cube constraint, make the constraint Stiffness lower. In particular fast moving constraints or hairs may cause hair to shoot out of the constraint at high speed. A low Stiffness value will usually fix this.

Work with collision hair constraints



Two Collide Sphere collision constraints were used in this model: one for the head and one for the shoulders. The collision constraints are identified by the locators.

Unlike the other hair constraints, Collide Sphere and Collide Cube work on the entire hairs, not just a particular hair CV. These objects have several advantages over collision with geometry.

- Collisions are more accurate and stable.
- Clump Width and Collide Width Offset are handled better.
- They're faster than geometry collisions, particularly if the geometry is complex and near the hair.
- Hairs do not get stuck, as they can with geometry.
- These constraints can be assigned per hair clump, while geometry collisions affect an entire hair system.
- The intensity of collision repulsion can be modulated using the Stiffness attribute. At a value of zero there will be no collisions.
- If the friction is high you can use two collide constraints like tweezers to pick up hair. (Doing this with geometry collisions would tend to push the hair through the surfaces, resulting in the hair CVs getting stuck in the surfaces.)

Typically you would use several of these constraints grouped under the transforming geometry, approximating the shape of the geometry in colliding regions like the head and shoulders. For organic objects you might want to use several spheres, scaling some into ellipsoids. The Collide Cubes are best for walls and flat surfaces, although in some cases the sharp edges can lead to stability problems that don't occur with spheres. However, low Stiffness values for Collide Cube constraints tend to smooth out the cube edges.

On the other hand, highly non-proportionally scaled spheres can have problems with points sliding towards the edges (most curved regions). This is not a problem with the non-proportionally scaled cubes.

Assign a Paint Effects brush to Hair

You can assign a Paint Effects brush to the hair system. This is useful for creating effects, such as vines or feathers for hair. The hair output can be Paint Effects or NURBS curves.

To assign a Paint Effects brush to hair

- 1 Select a brush from the Visor.
- 2 In Outliner, select the hairSystem.
- 3 Select Hair > Assign Paint Effects Brush to Hair.
- 4 The brush now replaces the hair. Depending on the brush, you may need to tweak the settings in the brush's Attribute Editor. Try doing the following:
 - Change the Global Scale.
 - Go to the Tubes section, then Creation and adjust the look and size of tube segments.
 - Go to the Tubes section, then go to Behavior and then Forces and set Path Follow to 1 and Length Flex to 1. You can also increase the Path Attract value, which makes the brush stroke cling to the curve.
 - For more information, see "Tips for Paint Effects brushes assigned to Hair" on page 67.
- 5 If you originally output to Paint Effects, then in the pfxHairShape node you may want increase Display Quality.
- 6 In the hairSystemShape node you may want to reduce the Hairs Per Clump to 1 and adjust the Clump Width Scale.

4 | Modifying hair

How do I? > Tips for Paint Effects brushes assigned to Hair

Tip To create your own hair look with polygons, you can create a mesh brush and paint a test stroke, then assign this brush to the hair system following the procedure above. Next, convert the Paint Effects to polygons. You can even texture these with hair images. The width attributes on the hair system still affect the polygons.

For a better looking polygon, before converting, decrease the brush width (0.05) and set flatness to 1.



Image created by Duncan Brinsmead

Tips for Paint Effects brushes assigned to Hair

Overridden Brush Attributes

Hair system hairs become stroke paths for an assigned brush, so each hair is like a brush stroke. The normal of these strokes is determined by the hair's twist vector (as opposed to the surface normal with the regular Paint Effects stroke). The Brush Width attribute on the brush is overridden by the Hair Width attribute on the hair system. The Color1 attribute on the brush is overridden by the hair system color (Hair Color * Hair Color Scale + HSV Rand). Likewise the Specular Color, Specular Power, Translucence, and Multi Streak attributes on the hair system override

4 | Modifying hair

How do I? > Tips for Paint Effects brushes assigned to Hair

those on the brush. All other attributes on the hair system, such as Curl and Turbulence, are applied in addition to any similar effects on the brush.

Using Brushes with Tubes turned off

When a brush with Tubes turned off is assigned to a hair system, each hair is like a regular stroke with the width being the Hair Width * Hair Width Scale (the Brush Width on the brush is ignored). This provides a way in which different Brush Types, such as Paint or Mesh can be used to render the hairs. For example you could make the hairs look like ribbons, or strings of pearls.

Generally when doing this you need to set the Hair Width to the desired Brush Width and make the Hair Color attribute the same as the color1 values from the brush. If the brush is textured you will also usually need to increase the u repeat value on the brush (depending on width and length of the hairs).

Using Brushes with Tubes turned on

When assigning a brush with Tubes turned on, you usually want to modify it to better follow the hairs.

Most preset brushes will generate new tubes along the length of each hair. To have the brush instead emit a single tube (or tree) exactly at the base of each hair set the following in the brush's Attribute Editor:

- Tubes Per Step = 0.0
- Start Tubes = 1
- Randomize = 0.0

Then in the hair system's Attribute Editor, set:

- Hair Width = 0.0 (This makes the Brush Width zero.)

Now to make the tubes better follow the hair curves, set the following in the brush's Attribute Editor:

- in the Tubes > Behavior section, set all Forces and Turbulence attributes' values to zero.
- in the Tubes > Creation section, set both Elevation Min and Max to zero.
- Adjust Global Scale to best approximate the curve length.
- Increase Path Follow and/or Path Attract to follow the hair.
- Increase Length Flex to better follow stretching of the hair.

In doing this the relationship of segments on the brush to CVs on the hairs can affect the results. You may wish to have both values be similar. To adjust segments on the hairs you can either edit the hair system's Sub

4 | Modifying hair

Reference > Lock Length

Segments or the follicle's Sample Density (the latter will also affect the dynamic simulation). The segments on the brush can be adjusted through the Segments, Petal and Leaf Segments attributes.

Reference Hair > Scale Hair Tool

Activates the Scale Hair Tool for the selected hair system. Drag right to make the hair larger or longer and drag left to make the hair smaller or shorter. See "To scale hair" on page 56.

Hair > Modify Curves

Use these menu items to manipulate the hair curves to achieve the hairstyle you want. Modify one curve or multiple curves at the same time, as well as CVs. For information on how to modify hair curves, see "Edit hair curves" on page 56. These tools are also available in the Edit Curves menu and can be used on NURBS curves.

Lock Length

Locks the length of the hull for the selected curve or CV(s). For more detailed information, see Edit Curves > Modify Curves > Lock Length.

Unlock Length

Unlocks the length of the hull for the selected curve or CV(s). For more detailed information, see Edit Curves > Modify Curves > Unlock Length.

Straighten

Use this to straighten the hair curves. You can set the Straightness (default 1.0) and turn on or off the Preserve Length in the Straighten Curves Options window. For more detailed information, see Edit Curves > Modify Curves > Straighten.

Smooth

Use this to smooth the hair curves. You can set the Smooth Factor (default is 4) in the Smooth Hair Curves Options window. For more detailed information, see Edit Curves > Modify Curves > Smooth.

Curl

Use this to add curl to or adjust the curl of the hair curves. You can set the Curl Amount (default is 0.3) and Curl Frequency (default is 1.0) values in the Curl Curves Options window. For more detailed information, see Edit Curves > Modify Curves > Curl.

Bend

Use this to add bend or adjust the bend in the hair curves. You can set the Bend Amount (default is 0.2) and Twist (default is 0) values in the Bend Curves Options window. For more detailed information, see Edit Curves > Modify Curves > Bend.

Scale Curvature

Use this to adjust how much each segment of the curve(s) will be straightened or have their curvature exaggerated. You can set the Scale Factor (default is 1.1) and Max Curvature (default is 0.8) values in the Scale Curvature Options window. For more detailed information, see Edit Curves > Modify Curves > Scale Curvature.

Hair > Create Constraint

Use these menu items to add constraints to selected hair curves. For information on how to create constraints, See "Set up hair constraints" on page 61.

Hair > Create Constraint > Rubber Band

Adds a Rubber Band constraint to the selected hair curves. This is like attaching rubber bands from the constraint to the point set. The length of each rubber band is the distance from the constraint to the point at the start frame. If the distance between a point and the constraint becomes greater than the rubber band length a force is applied pulling it toward the constraint. See "Set up hair constraints" on page 61.

Hair > Create Constraint > Stick

Adds a Stick constraint to the selected hair curves. This is like attaching sticks from the constraint to the point set, where the sticks may rotate freely about the constraint center. This is similar to the Rubber Band constraint, except that when the distance between the constraint and points is less than the start distance a repulse force is also applied (in addition to the attractive force when the distance is greater). This tends to keep all the constrained points at a fixed distance (the distance at the start frame) from the constraint center. See "Set up hair constraints" on page 61.

4 | Modifying hair

Reference > Scale Curvature

Hair > Create Constraint > Transform

Adds a Transform constraint to the selected hair curves. This is like constraining the points to a block of jelly at the start frame. Unlike the Stick constraint, when the constraint node is rotated or scaled it will pull along the constrained points. The transform on the constraint node is effectively the transform for this block of jelly. This is useful when constraining hair to fall along a contact point, like a shoulder. Also this can be used to simulate hair being grabbed and twisted by a hand. If you animate the constraint's scale the hair can be pulled together or pushed apart. See "Set up hair constraints" on page 61.

Hair > Create Constraint > Hair to Hair

Adds a Hair to Hair constraint to the selected hair curves. This allows you to bind hairs together (like with a ribbon) where the hair group is free to move with respect to the constraint position. This is like a Stick constraint where the actual constraint is free to move with the hair. The constraint position is only referenced at the start frame, after which the internally used constraint is dynamically updated. See "Set up hair constraints" on page 61.

Hair > Create Constraint > Hair Bunch

Adds a Hair Bunch constraint to the selected hair curves. This can help create body to the hair as it animates in a fashion similar to self collision, but with much less computation. The initial set of points nearest the constraint will repel each other where they overlap (according to the clump widths). There is also a slight static cling where the points stick together slightly when they touch. If the hair clumps overlap at the start frame they may suddenly push apart (unlike the other methods, which have no force at the start of a simulation). You could run the simulation until it stabilizes then set the Start Position to handle this problem. See "Set up hair constraints" on page 61.

Hair > Make Collide

Sets the selected object to collide with the selected hair system. For more information, see "Make hair collide" on page 59.

Hair > Assign Paint Effects Brush to Hair

Takes the selected brush and assigns it to the current Hair system. Some tweaking of the brush settings may be required. For more information, see "Assign a Paint Effects brush to Hair" on page 65.

hairConstraintShape node

These are descriptions of the attributes in the hairConstraintShape node. For more information, see "Set up hair constraints" on page 61.

Constraint Method

This is the type of constraint: Rubber Band, Stick, Transform, Hair To Hair, Hair Bunch, Collide Sphere, Collide Cube. For descriptions of these constraint types, see "Hair constraint types" on page 63.

Stiffness

This is the stiffness of the spring attachments created by the constraint. The higher the Stiffness value, the more the curves tend toward the position of the rest curves. Default rest curves are normal to the object's surface.

Glue Strength

This is the strength of the glue holding the constraint. A value less than one can allow the constraint to break during the simulation if the tension exceeds the strength. A value of one is infinitely strong and will not break. Rewind to frame 1 in order to re-glue. After a break, a setting of 1 reattaches the glue.

Point Method

These are the methods for calculating what point along the hair curve the constraint uses.

Nearest	This is the point along the hair curve nearest to the constraint locator at the start frame.
U Parameter	Using the value defined in the U Parameter attribute, constrains the point at that U value along the curve. The end of the curve is 1.0.
U Distance	Using the value defined in the U Distance attribute, constrains the point at that distance in worldspace from the start of the curve.

U Parameter

If the Point Method is U Parameter, this is the U value used in determining the point to constrain to along the curve. A value of 1 represents the tip of the hair curve.

U Distance

If the Point Method is U Distance, this is the U distance value, in world space units, used in determining the point to constrain to along the curve.

4 | Modifying hair

Reference > hairConstraintShape node

Local Position

These values represent the X, Y, Z location of the constraint locator in local space.

Curve Indices

These are the IDs of the hair curves affected by the constraint. The ID represents the index of the hair (UV grid location) on the hair system.

Warning Curve Indices IDs should not be edited.

5 Rendering Hair

How do I? Set up hair shading

How you set up hair shading depends on the hair output you selected (see “Hair Output” on page 10) and what renderer you plan to use. If you output to curves, then you can use the hair color attributes in both the hair system and follicle nodes, but if you output to Paint Effects and are rendering in the Maya Software renderer, you can also use the Multi Streak attributes in the hairSystemShape node. If you converted the Paint Effects strokes to polygons, you can also shade using the default tube shader that’s created upon conversion.

To set up hair shading

- 1 Select either the hair system or the desired follicles. (See “Select hair, follicles, curves, and CVs” on page 21.)
- 2 In the Attribute Editor, set the desired shading attributes, depending on your selection and your hair output.
 - To change global hair shading attributes, see “Hair system shading” on page 75.
 - To change shading attributes for selected follicles, see “Follicle shading” on page 76.
 - To change shading attributes after you converted Paint Effects to polygons, see “Tube shading” on page 76.

Hair system shading

In the hair system’s Attribute Editor, there is a Shading section for the hair with the following attributes: Hair Color, Hair Color Scale, Translucence, Specular Color, Specular Power, Cast Shadows, as well as Color Randomization. Setting these attributes controls how the entire hair system’s shading looks and renders.

If your hair output includes Paint Effects, then you can further shade using Multi Streaks. These shading attributes only appear when the scene is rendered.

Follicle shading

Each follicle has shading attributes that can override or blend with the hair system’s attributes. In the follicle’s Attribute Editor, go to the Per Follicle Overrides section, and then go to the Render Overrides section where the follicle shading attributes are located: Color Blend and Color. The Color Blend value is 0 by default, meaning only the hair system color value is respected. If you set a Color Blend value greater than 0, the

5 | Rendering Hair

How do I? > Tube shading

follicle color will be blended with the hair system's color as a percentage. For example, a value of 0.1 would mean the follicle color would be blended at 10% with the hair system color.

Tube shading

If you convert your Paint Effects hair system to polygons, then a default Paint Effects tube shader is created. The former color attributes you set in the hair system are converted to the tube shader, but there is no construction history for these attributes. Any shading changes you want to make after you convert Paint Effects to polygons must be done using the tube shader. For descriptions of the attributes in the tube shader, see "hairTubeShader node" on page 81

Set up hair self-shadowing



Image created by Duncan Brinsmead

Self shadowing is particularly important for natural looking hair. Shadowing for long hair, if using Paint Effects hair, has the same issues as shadowing with regular Paint Effects. Depth map shadows must be used since raytraced shadows are not supported. Also you must turn off Use Mid Dist Dmap. The Dmap Bias generally needs to be adjusted when Mid Dist Dmaps are off; increasing the Dmap Bias will allow more translucent penetration of the light into the hair, as well as avoid noisy grid self shadow artifacts on surfaces. Hair is very thin and you need to use fairly high resolution shadow maps. However, increasing the Dmap Filter Size

5 | Rendering Hair

How do I? > Set up hair self-shadowing

can help smooth the shadows which helps simulate the diffusion of light scattering through the hair. It can also soften chatter and aliasing of the hair shadow. (For more information about light and shadow attributes, see *Shadow attributes* and *Shadow in Maya* in the Lighting guide.)

In terms of Dmap Bias you should generally start with a low value, then increase it until surfaces no longer have self shadow artifacts (dark fringes on the surface). You might then further increase this value to allow for more light penetration into the hair. In general the higher the Dmap Filter Size, the larger the Dmap Bias should be. For very soft translucent hair, you should use a relatively high filter size and large Dmap Bias. Sometimes you can get similar effects with lower filter sizes combined with lowering the depth map resolution, although the filter size should not go below 2.

In some cases you might need to turn off Use Dmap Auto Focus and set the Dmap Width Focus value manually, as Paint Effects elements are not considered in the auto focus region determination. For point lights, generally set the focus to 90 degrees. For spotlights, generally set the focus to the spotlight angle. For directional lights, the focus is not an angle, but a width from either the center of the shadowing objects or, if Use Light Position is on, then a distance from the light axis.

You also need to have some shadow casting geometry in the scene in addition to the hair, or no depth map will be created. (This is a limitation of Paint Effects.) The geometry must exist within the region in which the shadow map would be generated. (Paint Effects elements are currently ignored in the determination of whether or not to create a shadow map.)

For best results create ambient illumination on the hair using several dim shadowed lights of the environment color, rather than using an unshadowed ambient light. If desired, specular highlighting can also be turned off for these lights.

To set up self shadows on hair

- 1** Create a light.
- 2** In the light's Attribute Editor, increase the value for Intensity (such as 1.5).
- 3** In the Shadows section:
 - Turn on Use Depth Map Shadows.
 - Turn off Use Mid Dist Dmap.
 - Optionally, turn off Use Dmap Auto Focus and then set Dmap Width Focus.
 - Increase the Dmap Filter Size to blur the light in the hair for realism.

5 | Rendering Hair

How do I? > Render scenes with hair

- Set Dmap Bias to set how far the light filters through the hair, for example, 0.006. The required Dmap Bias may be different for the different light types.

Render scenes with hair



Hair using Paint Effects can be rendered directly using the Maya Software renderer. If you convert the Paint Effects to polygons, then you can render Hair in the mental ray and Maya Hardware renderers. (See *Convert Paint Effects to polygons*.) Alternatively you can output just curves to another renderer, such as RenderMan.

Tip You can render more hairs cheaply using Paint Effects Multi Streaks. These attributes are in the Multi Streaks section of the hairSystemShape node.

You can render either a single frame, or render an animation by performing a batch render. For information, see the following:

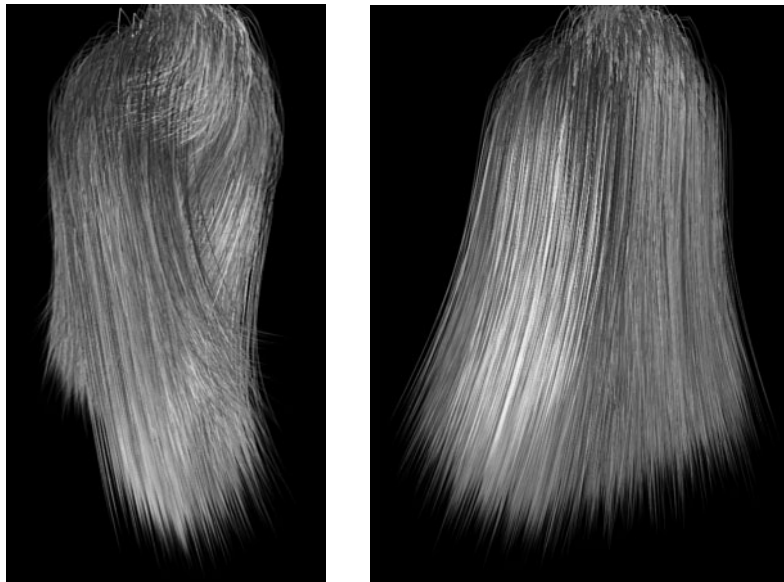
- "To render a single frame with hair" on page 78
- "To render an animation with hair" on page 79
- "Rendering using distributed render" on page 80

To render a single frame with hair

- 1** Before rendering be sure to display the hair system's Current Position (Hair > Display > Current Position) and go to the frame you want to render.
- 2** Click the Render Globals  button in the Status Line and do the following:
 - Select a renderer from the Render Using drop-down list.
 - If you're rendering Paint Effects using the Maya Software renderer, then turn on the Oversample and Oversample Post Filter options in the *Paint Effects Rendering Options* section in the Maya Software tab. This makes the hair even more realistic looking.
 - If you're rendering using mental ray, for information about the options in the mental ray tab, see *mental ray tab*.
- 3** Click the Render  button in the Status Line. This renders the current frame in the Render View window.


5 | Rendering Hair

How do I? > Render scenes with hair



Images created by Rick Kogucki

To render an animation with hair

- 1 Before rendering be sure to display the hair system's Current Position (Hair > Display > Current Position).
- 2 Click the Render Globals  button in the Status Line. The Render Global Settings window appears.
- 3 Select a renderer from the Render Using drop-down list.
- 4 In the Common tab, do the following:
 - In the File Name Prefix field, type the prefix you want to use for the rendered images.
 - In the Frame/Animation Ext field, select name.ext.#.
 - In the Start Frame and End Frame fields, type the first and last frames in the sequence you want to render.
 - Optionally, go to the renderer-specific tab and turn on Motion Blur in the Motion Blur section.

Notes The animation will take longer to render with Motion Blur turned on.

Motion blurred scenes would benefit from scene caching to prevent simulation problems during frame sampling. See "Use hair caches" on page 46.

5 | Rendering Hair

Reference > Rendering using distributed render

- If you're rendering Paint Effects using the Maya Software renderer, then turn on the Oversample and Oversample Post Filter options in the Paint Effects Rendering Options section in the Maya Software tab. This makes the hair even more realistic looking.
- If you're rendering using mental ray, for information about the options in the mental ray tab, see *mental ray tab*.

5 Do one of the following:

- Select Render > Batch Render.
- Select Render > Batch Render > . The Batch Render Animation window appears. Change the options if desired and click Batch Render.

To view your rendered animation, launch Fcheck and then open the rendered.iff file. For more information on viewing the animation, see the *Rendering* guide.

Rendering using distributed render

If you are performing a distributed render (for example, using Dispatcher), or if you are splitting up the render for any reason, you should create a hair cache so:

- you can do distributed rendering and have the simulation match exactly
- you can do distributed rendering without Maya Unlimited licenses (Hair simulation requires Maya Unlimited).

For details, see "Use hair caches" on page 46.

Reference hairTubeShader node

The hairTubeShader node is created when you convert Paint Effects hair to polygons. (See "Tube shading" on page 76.) Most of the attributes in the hairTubeShader are common to all Maya shaders. For descriptions of these attributes, see *Common surface material attributes* in the online Rendering guide.

6

Samples and techniques for Hair

Sample hairstyles

The following are workflow suggestions and examples for two hair styles.

- "Create wavy, curly hair" on page 83
- "Create ponytails and braids" on page 86

Create wavy, curly hair



Images created by Duncan Brinsmead. Model created by Inspeck.

You can create waves and curls easily by using either the hair system Clump Curl or Curl attributes in the Displacements section. This is in general preferable to directly shaping the Start and Rest position curves, as you don't need to simulate nearly as many CVs. (Also, highly curled Rest curves can result in unstable animations.)

As a rule of thumb it is preferable to use low CV count curves for the simulation and then apply detailed shaping to the result of the simulation, increasing Sub Segments on the hair system when more visual detail is required. However large scale shaping of the hair generally must be done by editing the Start and Rest curve positions. Clump Curl determines how much the hair clump curls about the central axis of the clump. For very tight curls you might need to type in values outside the range of the graph. You might also need to increase Sub Segments when doing this. The graph determines the rate of curl along the clump with a value of 0.5

6 | Samples and techniques for Hair

> Create wavy, curly hair

being no curl. If desired you can reverse curl direction mid clump. The displacement Curl is relative to the center of each hair, rather than each clump. The amount of this curl displacement is relative to the Hair Width, so if you change the Hair Width you may need to change the Curl displacement.

You can create frizzy or kinky hair by using the Curl displacement combined with a high Curl Frequency and a large Sub Segment count. The high Sub Segments may slow down refresh, so you might want to lower the hair system Display Quality when doing this for faster playback. Curls are the same for all hairs in a clump. If the clump is narrow and the curl displacement is large, this will create corkscrew shapes. For “afro” style curls, or partly ironed kinky hair you might want to have less regular curling. The Noise displacement is different from the curl in that each hair within a clump gets a different displacement. Experiment with typing values outside the slider range for Noise, such as 2 or 3. Also, to see the effect of high frequency values, you will need to increase the Sub Segments.

Curls can have a fairly bouncy motion. In general you should be able to get the desired behavior by running the simulation and playing with different Stiffness settings. For very loose heavy curls, the length of the clump may stretch, like a “Slinky.” This can be handled by increasing the Length Flex attribute. The Iterations attribute affects both the Length Flex and the Stiffness. Often it will be sufficient to leave the Length Flex at zero and simply lower the Iterations when more length flex is required. (The typical reason to increase the iterations is to provide greater stiffness or less length flexing.)

In terms of motion, kinky and wavy hair is frequently very damped and stiff, almost like a block of solid material. It helps to create the hair with a low CV count as this makes it easier to keep it stiff (not as many iterations required). In addition to making the Stiffness 1 and the Iterations relatively high, you can further stiffen the hair by creating Transform constraints for the hair and grouping these constraints under the head. If the Point Method on a constraint is set to use a U Parameter of 0.5, then the CVs at middle point on hairs will be locked to the motion of the head. Lowering the Stiffness on the constraint can allow these locked points to move a little and to look more natural.

It may also be useful to use the Damp attribute to keep the curled elements from being too springy. Self collisions of hair tend to dampen the natural springy motion that would happen with a single hair, especially with kinky hair; however individual heavy curls may still be quite springy.

6 | Samples and techniques for Hair

> Create wavy, curly hair

Note Curls that are not properly self shadowed will look flat. See the description of self shadowing for pony tails and braids in "Create ponytails and braids" on page 86. For more information about light and shadow attributes, see *Shadow attributes* and *Shadow in Maya* in the Lighting guide.



Image created by Duncan Brinsmead

6 | Samples and techniques for Hair

> Create ponytails and braids

Create ponytails and braids



Images created by Duncan Brinsmead

The simplest way to create a pony tail is to use a single clump. To best shape the clump, a different hair system could be used for the pony tail than from the rest of the hair. You could paint a single hair at the desired location of the pony tail. In the hair system, make the Clump Width relatively large and adjust the Clump Width Scale to shape the pony tail. The base of the clump may be much wider and then quickly narrowing to simulate the look of hairs being pulled into the tie at the base of the pony tail. After the tie point, the clump would then widen out a little. You can adjust the Stiffness Scale so that the base of the pony tail is very stiff, but then becomes sharply less stiff shortly after the tie point. One problem with this method is that clump bases do not follow the curvature of the head, so for a wide clump base some hairs may not sit on the head. Slightly inseting the Start curve position into the head can help compensate for this. The hairs coming from a very large area of the head into a pony tail are better handled by an additional hair system or set of follicles. You could potentially merge these into a tie object at the clump base, hiding the transition to the single clump used for the ponytail.

A very slight amount of Clump Curl may help with the ponytail shape. You might also need to increase the number of Hairs Per Clump to a high value (200 or more) to get enough density in the pony tail. Multi Streaks can help get the required density without impacting render times too much.

6 | Samples and techniques for Hair

> Create ponytails and braids

Hair clumps have built in braiding; just turn on the Braid attribute on a follicle and the clump will be internally a single braid composed of three strands. You can paint this attribute, or select the follicles to become braids and turn Braid on in the Channel Box. The shaping of a braid is similar to a single clump ponytail. In general, make the base wide to simulate hair pulling off the scalp into the braid. The Clump Width should taper quickly at first and then generally continue to taper until near the braid end. If desired, the tuft of hair at the end of the braid can then fluff out by increasing the Clump Width slightly at the very end. Unlike ponytails, braids do not have a uniform profile or cross-section - they are flatter. In general, the natural orientation is with the flat side horizontal. You can adjust the Clump Twist on the hair system so that most of the braids have the right orientation. Any odd clumps that still have the wrong twist can then be adjusted using the follicle's Clump Twist Offset. In order to fully resolve the curling in the braid, you might need to increase the hair system Sub Segments value to a large value, especially if the clump is skinny (the number of braids is proportional to the Clump Width).

With both ponytails and braids proper self shadowing of the hair is critical to achieve the tube-shaped look of the clump. Keep in mind that the clump is not like a modeled tube, which uses the angle of the surface with the light to determine shading. Instead, hairs on the side of the clump away from the light will be as bright as those on the light-facing side unless they receive shadows cast from other hairs. For Paint Effects rendering, depth map shadows must be used with Use Mid Dist turned off. The Dmap Bias on the light should be carefully adjusted and it can also help to make the Dmap Filter size high (3 or more). (For more information about light and shadow attributes, see *Shadow attributes* and *Shadow in Maya* in the Lighting guide.)

You can also create a pony tail by combining many individual hair clumps. There are a few techniques you can use to pull hairs together:

- Select the Start curve end CVs, then scale down while holding the "L" (Length Lock) key. Be careful when doing this as operations done while Lock Length is on do not undo fully. Also you don't want to lose the orientation of the curves near the base of the scalp. In general, editing the Start position curves is the most direct way to shape the hair. The Lock Length feature is quite helpful when doing this.
- Create a Transform constraint for the hairs you want to modify. While running Interactive Playback, scale/translate/rotate the Transform constraint to pull the hair together. Stop playback and then set the Start position from the Current position. Once you're done, delete the constraint.

6 | Samples and techniques for Hair

> Dynamic spline IK chain illustrated using a butterfly tail

- Select the hair system then create a Radial field and give it a negative Magnitude. Run the simulation until the hair comes together. Set the Start position from the Current position and then delete the Radial field.

When you have positioned the hair together you then need to pin it together so it doesn't fall apart during the simulation. To do this, you can create a Hair to Hair constraint near the base of the pony tail. You might want to group this constraint with the head, so you won't need to reposition the constraint if you later change the Start position of the head. A Hair to Hair constraint is good if you want the attachment point to be able to flop significantly, although the direction of the hairs will not be fully confined by a single Hair to Hair constraint. A Transform constraint that is grouped with the head may function better for a ponytail that is stiffly bound to a point on the head. One or two additional constraints further up the ponytail may also help.

Braids are also possible in this manner, but more difficult. In general hair to hair constraints may not be sufficient to hold a braided shape together. Rest curves can help with this, although in general the follicle Braid attribute should be used instead.

Sample dynamic curve scenarios

Here are two examples using dynamic NURBS curves.

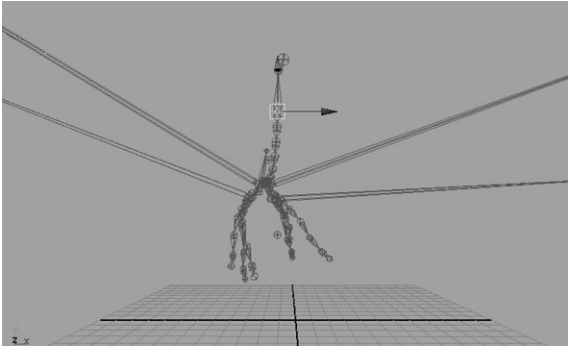
- "Dynamic spline IK chain illustrated using a butterfly tail" on page 88
- "Stiffness Scale along curve and emit particles from curve illustrated with a fishing rod and line" on page 90

Dynamic spline IK chain illustrated using a butterfly tail

In this scenario a dynamic spline IK chain is created and used on a dragonfly-type bug model. As the dragon bug moves about, its tail wiggles slightly.

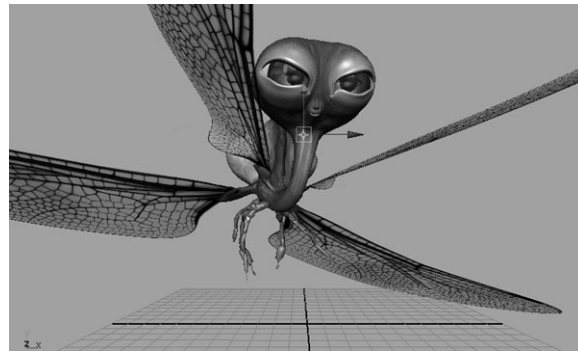
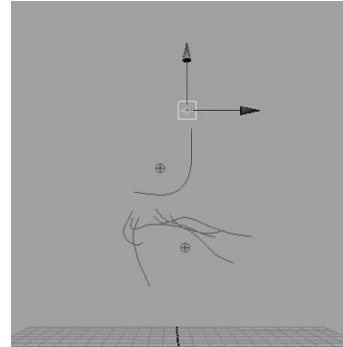
6 | Samples and techniques for Hair

> Dynamic spline IK chain illustrated using a butterfly tail



1 Joints of body, tail and legs of the dragon bug

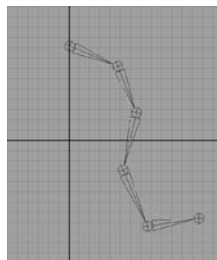
2 Dynamic curves used for body, tail and legs of the dragon bug



3 Hardware render of the dragon bug

To create a dynamic spline IK chain

- 1 Create a new scene and switch to the Side orthographic view.
- 2 In the Animation menu set, select Skeleton > Joint Tool.
- 3 To draw a tail in a rest position, as shown in the image below, click near the top of the Y-axis and then click to create joints as though they were along the tail. At the last joint press Enter.



- 4 Select Create > Curve CV Tool and trace a curve over the joints, clicking at each joint to create a CV. Press Enter at the end of the last joint.

6 | Samples and techniques for Hair

> Stiffness Scale along curve and emit particles from curve illustrated with a fishing rod and line

- 5** With the curve selected, in the Dynamics menu set, select Hair > Make Selected Curves Dynamic.
- 6** Select Hair > Display > Current Position.
- 7** To attach the curve into the chain, in the Animation menu set, select Skeleton > IK Spline Handle Tool > .
- 8** In the IK Spline Handle Settings editor, turn off Auto Create Curve.
- 9** Follow the instructions in the Help Line, which are:
 - Click the start joint.
 - Click the end joint.
 - Click the Current Position curve.
- 10** To select the follicle, do the following:
 - Select the curve.
 - Select the follicleShape node in the Attribute Editor.
 - Click the Select button at the bottom of the Attribute Editor.
- 11** In the follicleShape node, set Point Lock to Base.
- 12** To play the simulation, select Solvers > Interactive Playback.
- 13** To stabilize the dynamic curve's behavior, adjust the Stiffness value and the number of Iterations in the Dynamics section of the hairSystemShape node of the Attribute Editor.

Stiffness Scale along curve and emit particles from curve illustrated with a fishing rod and line

In this scenario a dynamic curve is created to simulate casting a fishing line. The Stiffness Scale is varied along the curve so it is somewhat stiff at the fishing rod end and very flexible along the fishing line. Particles are set to emit from the dynamic curve to simulate water dripping off the fishing line once it's been cast and reeled in.

6 | Samples and techniques for Hair

- > Stiffness Scale along curve and emit particles from curve illustrated with a fishing rod and line

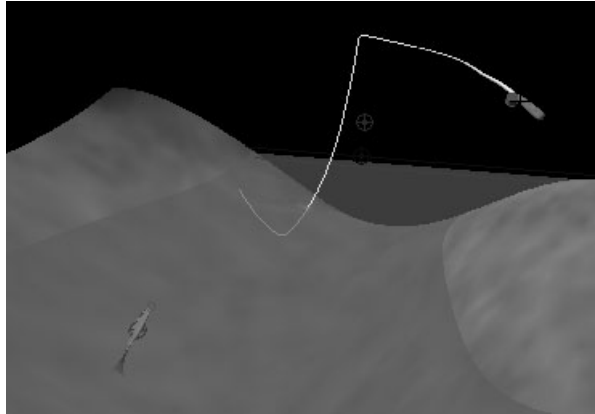
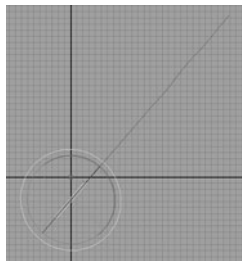


Image created by Duncan Brinsmead

To make the fishing rod and line

- 1 Create a new scene and switch to the Side orthographic view, then dolly out so you can see at least 30 spans.
- 2 Using Create > CV Curve Tool, create a long curve of about 30 spans straight up the Y-axis. You can use grid snap to help you. This curve will be both the fishing pole and the line.
- 3 Create a narrow NURBS cylinder for the base of the rod and position it beneath the curve.
- 4 Select the curve and to make it dynamic, select Hair > Make Selected Curves Dynamic.
- 5 Select Hair > Display > Current Position.
- 6 Open Hypergraph (Window > Hypergraph) and middle-drag the follicle under the cylinder. This parents the follicle to the cylinder.
- 7 Rotate the cylinder 45 degrees to the right, as in the image below. The curve rotates with it.

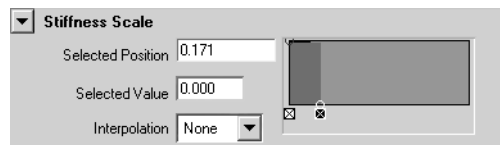


- 8 Select the curve, then in the follicleShape node in the Attribute Editor, set Point Lock to Base.
- 9 In the hairSystemShape node, do the following:

6 | Samples and techniques for Hair

> Stiffness Scale along curve and emit particles from curve illustrated with a fishing rod and line

- in the Dynamics section, set Stiffness to 0.500 and Drag to 0.005.
- in the Collisions section, turn on Collide Ground and set the Ground Height to -5.0.
- in the Dynamics section, edit Stiffness Scale graph by setting Interpolation to None and then add one point to the graph as shown in the image below. The first part of the graph represents the fishing pole and has stiffness scale value of 1, while the rest is the fishing line with a stiffness scale value of 0.



10 Play the simulation.

11 Once the simulation has settled down, stop the simulation.

12 Select Hair > Set Start Position > from Current.

To add the water

Now you want to add water dripping from just the part of the line which is under water.

- 1** Select the curve and, in the Modeling menu set, select Edit Curves > Rebuild Curve > .
- 2** In the Rebuild Curve Options window, set the following and then click Rebuild:
 - Rebuild Type to Uniform
 - for Keep, turn on CVs
 - turn on Keep Original
- 3** Select the original curve (curveShape2) in the Outliner and hide it. (Display > Hide > Selection)
- 4** Using the X-axis as the water line, select a curve point at the point the fishing line is under water.
- 5** Select Edit Curves > Detach Curves > , turn off Keep Original and then click Detach.
- 6** Delete the first half of the curve.
- 7** Select the remainder of the curve and select Particles > Emit from Object > .
- 8** In the Emitter Options (Emitter from Object) window, select Curve as the Emitter Type, set Speed to 0 and then click Create.
- 9** Play to see the particles.

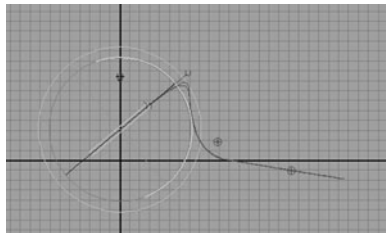
6 | Samples and techniques for Hair

> Advanced tips for working with Hair

- 10 Select the particles and in the particleShape tab in the Attribute Editor, set the Inherit Factor to 0.5.
- 11 To add a gravity field, select Fields > Gravity.
- 12 Select Display > Show > Show Last Hidden.
- 13 Play the simulation to see the particles, which should be dripping downwards from the part of the line that is underwater.

To cast the fishing line

- 1 Select the cylinder.
- 2 Select Solvers > Interactive Playback. Make sure your playback frame range is high.
- 3 Move the cylinder up above the water line.
- 4 Rotate the cylinder backwards and then quickly forwards in the X direction to cast the line.
- 5 If the line is not whippy enough, increase the Stiffness value. If Stiffness is already at 1, increase the Iterations until you achieve the desired effect.



Advanced tips for working with Hair

The following are suggested tips for working with Hair.

Max Hair Density option variable

It's helpful to know the following option variable:

```
createHairMaxDensity
```

Its default value is 100. To increase this value you could type:

```
optionVar -intValue createHairMaxDensity 150;
```

This determines the maximum rows/columns of hair you can create or paint on a surface. The follicles are named based on their position within a grid of this resolution. The reason for this naming is the Paint Hair Tool, which relies on the naming to find the hairs at a given UV position.

6 | Samples and techniques for Hair

> Using the pfxstrokes command

If this variable is greater, then the maximum number of paintable follicles on a surface will be greater; however, painting will be also slower, even if painting low follicle densities. If you change this variable then previously created hair systems will not be paintable (painting in one area may affect follicles that don't lie under the brush).

Decreasing the value of the variable might help if painting hair is slow, although you won't be able to create as high a density of follicles.

The default is a 100x100 grid, which is a max of 10000 follicles per surface.

Using the pfxstrokes command

The basic use of the `pfxstrokes` command is to dump Paint Effects tube information to a file. This can be useful to generate curves from Paint Effects or to send information to another renderer. The format for the data is different for hairs and brushes with Tubes turned on.

Paint Effects can call a `runtime` and `create` MEL scripts. These are defined as a string attribute on the brush node: `paint create func`, and `paint runtime func`. You set the string to the name of the function to call. This MEL function has a specific set of arguments that must be passed in and returned. The workflow is to copy one of the provided template MEL files, change the function name and file name and then edit the internals of the function. If you have any `runtime` or `create` functions set on the brush they are called as the stroke is drawn. The `pfxstrokes` command *fakes* a redraw call of the stroke without drawing anything. Therefore these scripts will also get evaluated when the `pfxstrokes` command is invoked.

Using a follicle node as a point on poly constraint

The follicle node can be used as a point on poly constraint. One method is to create some hairs, then delete everything except for the follicles. For example, delete the hair system, `pfxHair`, and Start position curves. You can then parent an object under the follicle. Or you can use the follicle node in scripts.

The following example script constrains a cone to the surface of a poly sphere. The cone will move relative to the normal and tangent at the defined uv point on the poly. (It will appear at the sphere center if the UV is set to a value not defined on the poly uv set.)

```
// create a cone, poly sphere and a follicle node
string $sphere[] = `polySphere`;
string $cone[] = `cone`;
string $fol = `createNode follicle`;

// get the parent transforms of the follicle
string $folTform[] = `listTransforms $fol`;
```

6 | Samples and techniques for Hair

> Attaching a skipping rope (dynamic curve) to hands

```
// connect the sphere to the follicle
connectAttr ($sphere[0] + ".outMesh") ($fol + ".inputMesh");
connectAttr ($sphere[0] + ".worldMatrix[0]") ($fol +
".inputWorldMatrix");

// apply the follicle output positions to its own transform
connectAttr ($fol + ".outTranslate") ($folTform[0] +
".translate" );
connectAttr ($fol + ".outRotate") ($folTform[0] + ".rotate"
);

// parent the cone under the follicle
parent -r $cone[0] $folTform[0];
// the default uv of 0 0 doesn't exist on the poly sphere,
so we set it
setAttr ($fol + ".parameterV") 0.5;
// rotate the cone to point along the normal
setAttr ($cone[0] + ".rotateY") -90;
```

Attaching a skipping rope (dynamic curve) to hands

Use a Transform constraint and group or constrain the hairConstraint node to your moving object. This should lock the dynamic curve so it follows twists and rotations of the object and behaves like a spring with an attachment of stiffness. If the dynamic curve is not attaching well, then it is a bug with the constraint. The relative constraint position is determined at the start frame, therefore there will be no force applied at the start frame. The Start curve needs to be modeled through the grasping hand.

The skipping rope case can also be handled by grouping the follicle under the hand near the base, then using a Transform constraint at either end of the rope grouped to the other hand. However, you can't constrain the start point using the No Attach option for the Point Lock attribute in the follicleShape node. With No Attach, the start point keeps moving under gravity and is not pulled by the curve tension by constraints.

Hair as a wire deformer

Hair curves can be useful for wiggle effects when parented to the moving object and applied as wire deformers. The hair can be used as a wire deformer to make all or part of a surface dynamic.

Troubleshoot Hair

The following are solutions to problems you may encounter when using Hair.

6 | Samples and techniques for Hair

> Hair simulation is slow when using NURBS Curves output

Hair simulation is slow when using NURBS Curves output

If you set the Output to NURBS Curves when creating hair, and you created a lot of hair, the simulation may be slow to initialize. The workaround is to set the Output to Paint Effects and NURBS Curves and hide the curves when running the simulation.

Undo doesn't work with Lock Length on

When using Lock Length on NURBS curves, Undo won't work properly. The workaround is to move CVs slightly and then turn on Lock Length.

Unruly, jiggy hairs during playback

When you're playing the Hair simulation, if any hairs are unruly or won't relax, you can do any of the following:

- First, try adjusting the Damp attribute in the Dynamics section of the hairSystemShape node in the Attribute Editor.
- Increase the Stiffness value or number of Iterations in the Dynamics section of the hairSystemShape node in the Attribute Editor.
- Select the hair curve and in its follicleShape node, turn on Dynamics Overrides and increase the Stiffness and/or Length Flex values.
- Select the hair curve and in its follicleShape node, change Simulation Method to Passive. A passive curve interpolates behavior from neighboring active curves.

Index

A

animation	
viewing	80
Append Time Range	
append to hair cache option	49
append to a hair cache	46
Append to Cache	
hair	49
Append to Cache options	
hair	49
Assign Hair System	31
Assign Paint Effects Brush to Hair	71

B

Bend	
hair, edit curves	70
Braid	
follicle attribute	41
braid	
hair, how to	58
braids	
creating	86
brush	
Paint Effects and hair	65

C

Cache Time Range	
create hair cache option	48
caching	
hair	46
Cast Shadows	
hair system attribute	38
Clump and Hair Shape attributes	33
Clump Curl	
hair system attribute	34
Clump Flatness	
hair system attribute	35
Clump Twist	
hair system attribute	33

Clump Twist Offset	
follicle attribute	43
Clump Width	
hair system attribute	33
Clump Width Mult	
follicle attribute	42
Clump Width Scale	
hair system attribute	34
Collide	
follicle attribute	42
hair system attribute	36
collide	
hair	59
Collide Cube	
hair constraint type	64
Collide Ground	
hair system attribute	37
Collide Over Sample	
hair system attribute	36
Collide Sphere	
hair constraint type	64
Collide Width Offset	
hair system attribute	36
collision hair constraints	64
Collisions hair system attributes	36
Color	
follicle attribute	43
Color Blend	
follicle attribute	43
Color Randomization	
hair system attribute	38
Constraint Method	72
constraint node	
hair	72
constraint types	
hair	63
constraints	
hair, collision, hair	
collision constraints	64
hair, setting up	61
Convert Selection	
hair	31

Index

- create
 - curly, wavy hair 83
 - ponytails, braids with hair 86
 - Create Cache
 - hair 48
 - Create Cache options
 - hair 48
 - Create Constraint
 - hair 70
 - Create Follicles
 - Paint Hair Tool options. 29
 - Create Hair 26
 - create hair cache 46
 - Create Hair options 26
 - Create Passive Follicles
 - Paint Hair Tool options. 29
 - Create Rest Curves
 - create hair attribute 28
 - creating 83, 86
 - Curl
 - hair system attribute 39
 - hair, edit curves 70
 - Curl Frequency
 - hair system attribute 39
 - Curl Mult
 - follicle attribute 43
 - curly hair 83
 - Current Position hair curves 15
 - Current Time
 - hair system attribute 36
 - Curve Indices 73
 - curve positions
 - setting for hair 22
 - curves
 - Current Position hair. 15
 - displaying hair 20
 - dynamic, scenarios 88
 - hair, editing, edit
 - hair curves56
 - make dynamic 25
 - passive hair. 16
 - Rest hair 15
 - selecting, hair 21
 - Start hair 15
 - CVs
 - selecting, hair 21
- ## D
- Damp
 - follicle attribute 42
 - hair system attribute 35
 - Degree
 - follicle attribute 41
 - Delete Cache
 - hair. 49
 - Delete Entire Hair System 32
 - Delete Follicles
 - Paint Hair Tool options 29
 - delete hair 26
 - delete hair cache. 46
 - Density Mult
 - follicle attribute 42
 - Dispatcher 80
 - Displacements hair system attributes. 39
 - display
 - hair curves 20
 - Display Quality
 - hair system attribute 33
 - distributed render 80
 - hair. 80
 - Drag
 - hair system attribute 35
 - Draw Collide Width
 - hair system attribute 37
 - dynamic curve scenarios. 88
 - dynamic curves 9
 - effects. 18
 - making 25
 - Dynamic Overrides
 - follicle attributes 41
 - Dynamics hair system attributes. 35
 - Dynamics Weight
 - hair system attribute 36

E

Edge Bounded
 create hair attribute 28

Edit Follicle Attributes
 Paint Hair Tool options 29

emit particles
 dynamic curve scenario 90

Equalize
 create hair attribute 28

Extend Hairs
 Paint Hair Tool options 30

F

Flip Direction
 follicle attribute 41

follicle
 selecting 21

Follicle Attribute
 Paint Hair Tool options 30

Follicle Density U
 Paint Hair Tool options 30

Follicle Density V
 Paint Hair Tool options 30

follicle node attributes 40

Follicle Override Color
 Paint Hair Tool options 30

follicle shading
 shading
 follicle level76

follicles
 modifying 55

follicleShape node attributes 40

Frequency
 hair system attribute 38

Friction
 hair system attribute 36

G

Glue Strength 72

Gravity
 hair system attribute 36

Ground Height
 hair system attribute 37

H

hair 51

advanced tips 93

assign Paint Effects brush 65

behavior, concepts 51

behavior, how to modify 52

braiding 58

changing the look of 53

colliding, how to 59

connections 10

constraint types 63

constraints, setting up 61

create curly, wavy 83

create ponytails, braids 86

create, how to 19

creating, concepts 15

curve positions, setting 22

curve types 15

delete 26

distributed render 80

dynamic curves 88

dynamic effects 18

editing curves 56

hairstyle samples 83

length, adjusting 55

make collide 59

overview 9

Paint Effects, assign brush 65

Paint Hair Tool 10

painting 53

passive curves 16

play back simulation 45

rendering 10, 75, 78

scenarios, dynamic curves 88

selecting, hair system 21

self-shadowing 76

setting up constraints 61

shading

Index

shading hair75	
simulating	45
style, how to	52
styling, concepts	51
troubleshooting	95
UV set, selecting	23
UV sets	19
workflow	12
Hair Bunch	
hair constraint type	64
hair caches	46
Hair Color	
hair system attribute	38
Hair Color Scale	
hair system attribute	38
hair constraint attribute	72, 73
hair curve	95
hair curves	
display	20
Hair Length	
Paint Hair Tool options	30
hair output	10
Hair System	
Paint Hair Tool options	30
hair system	
assigning	23
modifying	54
hair system shading	75
Hair to Hair	
hair constraint type	63
Hair Width	
hair system attribute	33
Hair Width Scale	
hair system attribute	34
hairConstraintShape node	72
Hairs Per Clump	
hair system attribute	33
hairSystem node	32
hairSystemShape node	32
hairTubeShader node	81

I	
Intensity	
hair system attribute	37
Interactive Playback	45
Iterations	
hair system attribute	35
L	
Length	
create hair attribute	27
length	
hair, adjusting	55
Length Flex	
follicle attribute	42
hair system attribute	35
Light Each Hair	
hair system attribute	40
Local Position	73
Lock Length	56
hair, edit curves	69
Undo issue	96
long hair	9
look	51
M	
Make Collide	
hair	71
make curves dynamic	25
Make Hair Collide	59
Make Selected Curves Dynamic	
hair	31
Max Hair Density	
hair option variable	93
Modify Curves	
hair	69
modifying hair	51
motion blur	80
Multi Streak Spread1	
hair system attribute	40
Multi Streak Spread2	
hair system attribute	40

Multi Streaks
 hair system attribute 39
 Multi Streaks hair system attributes 39

N

nodes
 hair 32
 Noise
 hair system attribute 39
 Noise Frequency
 hair system attribute 39
 Num Collide Neighbors
 hair system attribute 37
 NURBS Curves
 simulation issue 96
 NURBS Curves hair output 10

O

Output
 create hair attribute 27
 Paint Hair Tool options 30
 output
 hair 10
 Override Dynamics
 follicle attribute 42

P

Paint Effects
 assigning to hair 65
 Paint Effects hair output 10
 paint hair 53
 Paint Hair Tool 10, 28, 53
 Paint Hair Tool options 28
 Paint Modes
 Paint Hair Tool options 29
 Parameter U
 follicle attribute 40
 Parameter V
 follicle attribute 40
 particles
 dynamic curve scenario 90

Passive Fill
 create hair attribute 27
 passive hair curves 16
 Per Follicle Overrides
 follicle attributes 41
 pfxHair node 32
 pfxstrokes command 94
 play
 hair simulation 45
 Point Lock
 follicle attribute 41
 Point Method 72
 point on poly constraint
 use follicle as 94
 Points Per Hair
 create hair attribute 27
 Paint Hair Tool options 30
 ponytails 86

R

Randomization
 create hair attribute 28
 render
 hair 78
 hair, distributed 80
 render farm 80
 Render Overrides
 follicle attributes 42
 rendering hair 10, 75
 Repulsion
 hair system attribute 37
 Rest hair curves 15
 Rest Pose
 follicle attribute 40
 Rubber Band
 hair constraint type 63

S

Sample Density
 follicle attribute 42

Index

Sampling		
append to hair cache option	49	
create hair cache option	48	
Scale Curvature		
hair, edit curves	70	
Scale Hair Tool	55, 69	
Self Collide		
hair system attribute	37	
self-shadowing		
hair	76	
Set Rest Position		
hair	31	
Set Start Position		
hair	31	
shading		
Tube	76	
Shading hair system attributes	38	
simulating hair	45	
Simulation Method		
follicle attribute	41	
hair system attribute	32	
simulation, hair		
slow	96	
skipping rope scenario	95	
Smooth		
hair, edit curves	69	
Specular Color		
hair system attribute	38	
Specular Power		
hair system attribute	38	
Speed		
hair system attribute	38	
spline ik chain		
dynamic curve scenario	88	
Start Direction		
follicle attribute	41	
Start Frame		
hair system attribute	36	
Start hair curves	15	
Static Cling		
hair system attribute	37	
Stick		
hair constraint type	63	
Stiffness	72	
follicle attribute	42	
hair system attribute	35	
Stiffness Scale		
dynamic curve scenario	90	
hair system attribute	35	
Straighten		
hair	69	
styling hair	51	
Sub Segments		
hair system attribute	33	
system, hair		
selecting	21	
T		
Thinning		
hair system attribute	33	
Transform		
hair constraint type	63	
Translucence		
hair system attribute	38	
Trim Hairs		
Paint Hair Tool options	29	
troubleshoot hair	95	
Truncate Cache		
hair	49	
truncate hair cache	46	
Tube shading	76	
Turbulence hair system attributes	37	
types of hair constraints	63	
U		
U Count		
create hair attribute	27	
U Distance	73	
U Parameter	72	
Undo		
issue when using Lock Length	96	
Unlock Length		
hair	69	
using with hair	94	

UV set
selecting, hair 23

V

V Count
create hair attribute 27

W

wavy hair
creating 83
Width Draw Skip
hair system attribute 37
wire deformer
hair curve 95

Index

Hair and Dynamic Curves
104